

## 5. EXPLODED VIEWS AND PARTS LIST



### [MATERIAL CODE STANDARDS]

Material codes and names and their respective naming rules are managed in accordance with the prescribed standards. Please refer to these standards when requesting a material.

#### 1. Material Code Type

● : Number

■ : Letter (Alphabet)

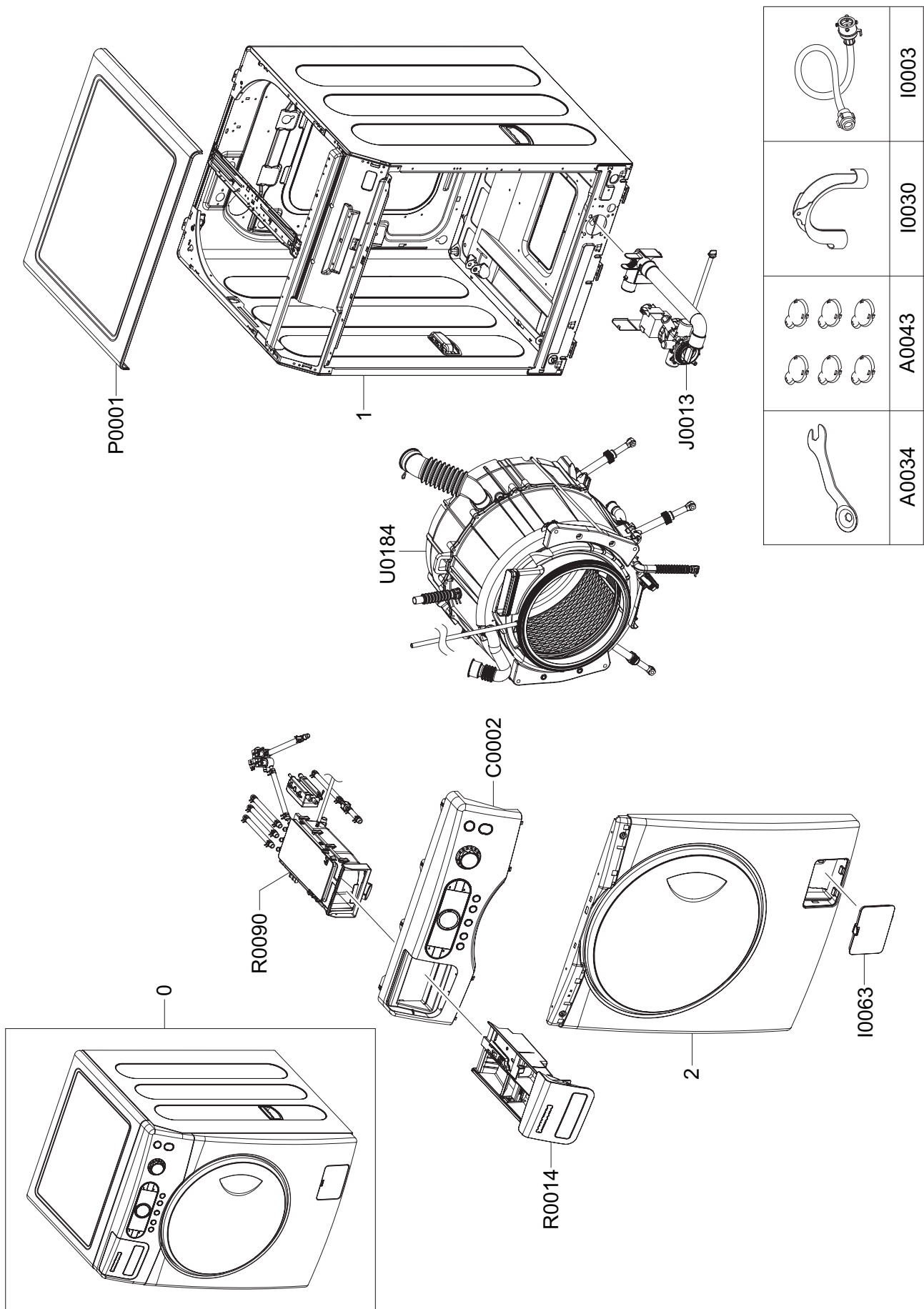
<b>Type 1</b>	 ex) 0204-000418 FREON	<b>Enterprise-wide parts</b> Type 1 materials can be used for all Samsung Electronics products. (Most electrical parts belong to this type.)
<b>Type 2</b>	 ex) DC96-01390A ASSY-CONTROL	<b>Division-wide parts (DC**-Washing machine)</b> Type 2 materials can be used for specific products. (Most instruments and tools belong to this type.)

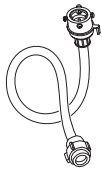

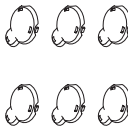

#### 2. Ass'y Materials

All ass'y material codes start with DC9\*.

An ass'y material is created by combining more than two materials. If a requested material cannot be provided, you can request an ass'y material that contains that material.

5-1. MAIN



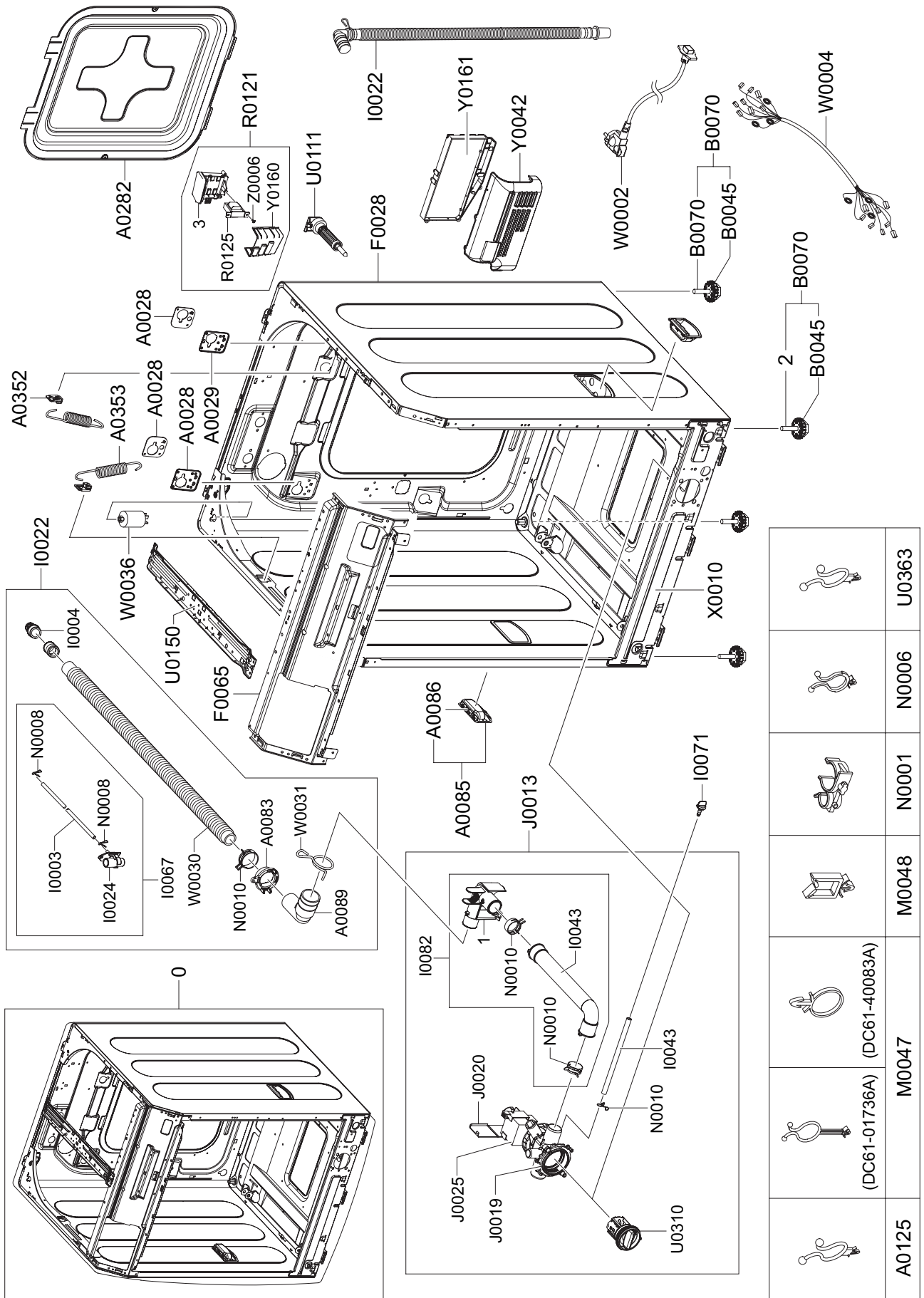
	I0003
	I0030
	A0043
	A0034








## MODEL CODE: WF8120SXW/XEG

Service Bom (SA: SERVICE AVAILABLE, SNA: SERVICE NOT AVAILABLE)

SVC Code	Code No.	Description	Specification	QTY	Un	SA/SNA
A0034	DC60-40146A	BOLT-SPANER	-,CR,-,T2.5,OD36,-,-,-,-	1	PC	SA
A0043	DC61-10688A	CAP-FIXER	SWF-P12,PP(TB53),-,-,-,WHT,-,	2	PC	SA
A0043	DC61-10688B	CAP-FIXER	SEW-HFR167AR,PP(TB53),T1.5,-,-	2	PC	SA
A0043	DC61-10688A	CAP-FIXER	SWF-P12,PP(TB53),-,-,-,WHT,-,	2	PC	SA
C0002	DC97-14990G	ASSY PANEL CONTROL	FRONTIER4MC,SEW-HFR17	1	PC	SNA
I0003	DC62-00079A	HOSE-WATER	P1405J,PVC+NYLON,-,-,-,L1500,	1	PC	SA
I0030	DC62-10278A	HOSE-HANGER	-,PP,-,-,-,-,NTR,JS20 RESIN	1	PC	SNA
I0063	DC63-00755F	COVER-FILTER	WF218ANW,ABS,-,-,-,-,WHT,	1	PC	SA
J0013	DC96-01362J	ASSY PUMP DRAIN	FRONTIER2MC-GLOBAL,WF815	1	PC	SA
P0001	DC97-12878B	ASSY COVER TOP	WF317,-,-,-,-,NEAT-WHT	1	PC	SA
R0014	DC97-12610N	ASSY DRAWER	F2 MC/EXP,WF8120SXW,WHITE,-,	1	PC	SA
R0090	DC97-07125U	ASSY HOUSING DRAWER	FRONTIER2MC-GLOBAL,W	1	PC	SNA
U0184	DC97-14805A	ASSY TUB&DRUM	SEW-HFR179ATR,NO VENT/ NO	1	PC	SNA
5.1-0	WF8120SXW_XEG	SET		1		
5.1-1		FRAME & COVER PARTS	Refer to 5.2 FRAME & COVER PARTS	1		
5.1-2		ASSY-FRAME FRONT & DOOR	Refer to 5.4 FRAME FRONT & DOOR	1		

## 5-2. FRAME & COVER PARTS



	U0363
	N0006
	N0001
	M0048
	M0047
	(DC61-01736A) (DC61-40083A)
	A0125

## MODEL CODE: WF8120SXW/XEG

Service Bom (SA: SERVICE AVAILABLE, SNA: SERVICE NOT AVAILABLE)

SVC Code	Code No.	Description	Specification	QTY	Un	SA/SNA
A0028	DC61-01586B	BRACKET-FIXER(L)	WF206LNW,SGCC(GI),T1.0,	1	PC	SA
A0028	DC61-01723A	BRACKET-FIXER(O/L)	WF206LNW,SGCC(GI),T2.	2	PC	SA
A0029	DC61-01587B	BRACKET-FIXER(R)	WF206LNW,SGCC(GI),T1.0,	1	PC	SA
A0083	DC61-00274A	GUIDE-HOSE	P/PV/M,PP,-,-,-,WHT,FRAME/DRA	1	PC	SA
A0085	DC97-10409B	ASSY HANDLE	-,SEW-6HR124AT,-,-,-,NEAT-WH	4	PC	SNA
A0086	DC61-20016U	HANDLE	WSLS1100A,PP,-,-,-,-,SNOW-WHT,	1	PC	SA
A0089	DC62-20023C	ELBOW-HOSE	S821,TPE(L2K70NUI),-,-,-,-,-,	1	PC	SNA
A0125	6046-000310	STAND OFF	ID11.5,L2,NTR,NYLON66,DAWH-3NA	4	PC	SNA
A0282	DC63-00522A	COVER-BACK	GW-PJT,GI,T0.35,W426,L507,-,-	1	PC	SA
A0352	DC61-02065A	GUIDE-SPRING	WF448AAG/XXA,POM,T4,W24,L25	2	PC	SA
A0353	DC61-01257C	SPRING ETC-HANGER	MACH,SWC,4.2,19.8,28.2	2	PC	SA
B0045	DC61-01652A	LEG-RING	K4-PJT,Nylon66+GF30,NON,SIL,L1	1	PC	SNA
B0045	DC61-01652A	LEG-RING	K4-PJT,Nylon66+GF30,NON,SIL,L1	1	PC	SNA
B0070	DC97-00920N	ASSY LEG	K4/Bonanza,BLK /Leg-Ring+Nylon	2	PC	SA
B0070	DC97-00920M	ASSY LEG	K4/Bonanza,BLK /Nylon-Coat'g,L	1	PC	SNA
B0070	DC97-14293A	ASSY LEG	SEW-HVR149ATA,HYBRAR-RUBBER,-,	2	PC	SA
F0028	DC97-15008M	ASSY FRAME	FRONTIER2MC-GLOBAL,WF8120SXW/	1	PC	SA
F0065	DC97-12707A	ASSY FRAME PLATE(U)	MACH-PJT,SEW-HFR167A	1	PC	SA
I0003	DC67-00089N	HOSE-WATER	SEW-HFW177TW,TPE,ID5,OD9,T2.0	1	PC	SNA
I0004	DC66-00180A	BUSH-HOSE	-,TPE(EPDM+PP),ID19,OD22,-,-,B	1	PC	SNA
I0022	DC97-02250F	ASSY HOSE DRAIN(O)	B1415J(NO-SPONGE),EPD	1	PC	SC
I0022	DC97-02250P	ASSY HOSE DRAIN(O)	SEW-HFW177TR,F2MC-W,-	1	PC	SA
I0024	DC61-01699A	GUIDE-HOSE DRAIN	SEW-HFR177AR,PP,-,-,-,W	1	PC	SA
I0043	DC67-00244A	HOSE-DRAIN	HOSE-DRAIN,EPDM,ID6,OD11,T2.5	1	PC	SA
I0043	DC67-00246A	HOSE-DRAIN	SEW-HFR177AR,EPDM,-,-,T2.0,-,	1	PC	SNA
I0067	DC97-12352B	ASSY GUIDE DRAIN	SEW-HFW177AR,F2MC-W,-,-	1	PC	SA
I0071	DC61-10673A	CAP-DRAIN	SWF-P12,PP(TB53),-,-,-,WHT,-,	1	PC	SNA
I0082	DC97-12278A	ASSY GUIDE HOSE	SEW-HFR177AR,MACH-PJT,-,	1	PC	SA
J0013	DC96-01362J	ASSY PUMP DRAIN	FRONTIER2MC-GLOBAL,WF815	1	PC	SA
J0019	DC61-01778C	CASE-PUMP	SEW-HFR179ATS,PP,-,-,-,WHT,PUM	1	PC	SA
J0020	DC63-00443A	COVER-PUMP	SEW-HW125,PP,T1.3,-,-,-,WHT	1	PC	SNA
J0025	DC31-30008D	PUMP-DRAIN	SW-70XP,220/240V,50Hz,SYNCHRO	1	PC	SC
M0047	DC61-40083A	HOLDER-WIRE	DAWH-3ND,NYLON66,-,-,-,-,NTR	3	PC	SNA
M0047	DC61-01736A	HOLDER-WIRE	SEW-HKR149ATA,NYLON66,-,-,12	1	PC	SA
M0048	DC61-00553B	HOLDER-WIRE SADDLE	-,NYLON66,-,-,-,-,NTR,D	1	PC	SA
N0001	DC61-00133A	CLAMPER HOSE-FIX	P1291,PP,ID24.5,OD29.5,	1	PC	SNA
N0006	DC61-40081A	HOLDER-WIRE	DAWH-2NC,NYLON66,-,-,-,-,NTR	4	PC	SNA
N0008	DC61-70029C	SPRING-CLIP	SEW-HW125,HSWR67,CD1.2,ID8.5	2	PC	SA

**MODEL CODE: WF8120SXW/XEG**

Service Bom (SA: SERVICE AVAILABLE, SNA: SERVICE NOT AVAILABLE)

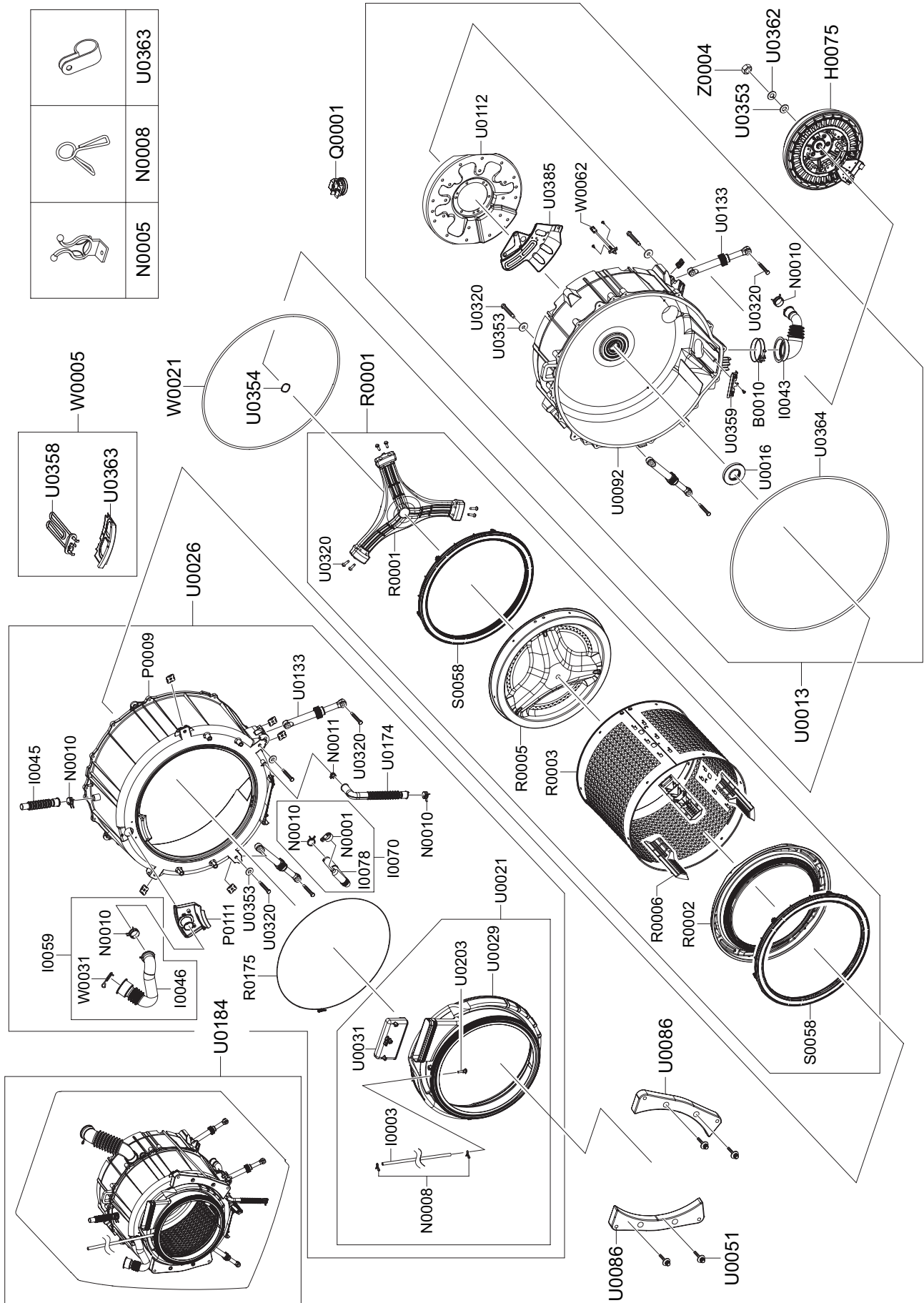
SVC Code	Code No.	Description	Specification	QTY	Un	SA/SNA
N0010	DC61-00219D	CLAMPER HOSE	SW-50A1S,SK5,-,ID33/OD35,-,	2	PC	SNA
N0010	DD65-00001F	CLAMPER HOSE	SDW-H120,STEEL,-,D10.5/T1.2	2	PC	SNA
N0010	DC61-01679B	CLAMPER HOSE	SEW-HFR167AR,SK5,-,T1.0/ID2	1	PC	SNA
R0121	DC96-01556A	ASSY TRANS REACTORV	SEW-HFR167ATS,TRANS	1	PC	SA
R0125	DC26-00009F	TRANS-REACTORV	-,WINGS,-,3mH,-,6A,-,-,-,	1	PC	SNA
U0111	DC97-07448D	ASSY FIXER TUB	FRONTIER,-,SCM435/RED,-,-	4	PC	SA
U0150	DC97-08632C	ASSY GUIDE WIRE	MARS-PJT,WF206LNW,-,T0.8	1	PC	SA
U0310	DC97-09928D	ASSY FILTER	V7-PJT,L65/W55/H55,-,-	1	PC	SA
U0363	6502-000127	CABLE CLAMP	DAWH-18NB,ID15,-,NYLON66,NTR	4	PC	SNA
W0002	DC96-00146A	ASSY POWER CORD	UCP2,250V/16A,-,1500/EUR	1	PC	SC
W0004	DC96-01288H	ASSY M. WIRE HARNESS	Frontier2 MC GLOBAL	1	PC	SA
W0030	DC62-10022Y	HOSE-PUMP	SEW-HFR177AR,PP,ID20.6,OD27,-,	1	PC	SNA
W0031	DC65-60125B	BAND-RING	-,HSWR,T2.4,PI25,-,YEL,-	1	PC	SNA
W0036	DC29-00013A	FILTER-EMI	LFT-215G,WINGS_PJT,250VAC,15A	1	PC	SA
X0010	DC97-06994B	ASSY PLATE BOTTOM	-,SEW-HFR177AR,SBHG1-A	1	PC	SNA
Y0042	DC63-00749A	COVER-PCB(M)	SEW-HFR177AR,PP,-,-,-,-,N	1	PC	SNA
Y0160	DC63-00798A	COVER-PCB(S)	SEW-HFR167AR,PP,-,-,-,-,N	1	PC	SNA
Y0161	DC92-00136B	ASSY PCB-MAIN	F2MC-GLOBAL,WF8120SXW/XEG,	1	PC	SA
Z0006	6002-000213	SCREW-TAPPING	TH,+,-,1,M4,L12,ZPC(WHT),S	1	PC	SA
5.2-0		FRAME & COVER PARTS		1		
5.2-1	DC61-01695A	GUIDE-HOSE PUMP	SEW-HFR177AR,PP,-,-,-,WH	1	PC	SNA
5.2-2	DC97-14294A	ASSY LEG BOLT	SEW-HVR149ATA,HYBRAR-RUBBE	1	PC	SNA
5.2-3	DC61-01920A	BRACKET-REACTOR	SEW-HFR179,PP,T2.0,W77.5	1	PC	SNA

---

**MEMO**

---

## 5-3. ASS'Y TUB & DRUM





## MODEL CODE: WF8120SXW/XEG

Service Bom (SA: SERVICE AVAILABLE, SNA: SERVICE NOT AVAILABLE)

SVC Code	Code No.	Description	Specification	QTY	Un	SA/SNA
B0010	DC65-00014A	CLAMPER HOSE-JOINT	GW-PJT,HSWR,-,ID82,ZP	1	PC	SA
H0075	DC31-00049A	MOTOR BLDC-DRUM	POM1300,0~1200,-,DC310V,	1	PC	SA
I0003	DC67-00089K	HOSE-WATER	SEW-HFR177AR,EPDM,ID5.0,OD9.0	1	PC	SA
I0043	DC67-00126A	HOSE-DRAIN	GW-PJT,EPDM,OD 68,-,T2.0,-,BL	1	PC	SA
I0045	DC67-00275A	HOSE-AIR	SEW-HTR122L,EPDM,ID22,OD26,T2.	1	PC	SA
I0046	DC67-00265A	HOSE-DRAWER TUB	MACH,EPDM,-,-,-,BLK,-	1	PC	SA
I0059	DC97-12748A	ASSY HOSE DRAWER TUB	SEW-HFR167AR,MACH-P	1	PC	SA
I0070	DC97-08633F	ASSY HOSE PRESSURE	FRONTIER4-PJT,WF218,-	1	PC	SA
I0078	DC67-00124A	HOSE-PRESSURE	GW-PJT,EPDM,-,-,-,BLK,-	1	PC	SA
N0001	DC61-00118A	CLAMPER HOSE-FIX	P1291,LYLON6/6,ID27,OD3	1	PC	SNA
N0005	DC61-00999A	HOLDER-WIRE	TS85-PJT,NYLON66,-,-,-,NTR,D	1	PC	SNA
N0008	DC61-70029C	SPRING-CLIP	SEW-HW125,HSWR67,CD1.2,ID8.5	1	PC	SA
N0008	DC61-70029C	SPRING-CLIP	SEW-HW125,HSWR67,CD1.2,ID8.5	2	PC	SA
N0010	DC61-00158A	CLAMPER HOSE	SW65ASP,SK5,ID23,-,T0.8/YEL	1	PC	SNA
N0010	DC61-00219E	CLAMPER HOSE	-,SK5,-,ID34/OD37.2,-,ZPC2	1	PC	SNA
N0010	DC61-00158A	CLAMPER HOSE	SW65ASP,SK5,ID23,-,T0.8/YEL	1	PC	SNA
N0010	DC61-00219D	CLAMPER HOSE	SW-50A1S,SK5,-,ID33/OD35,-,	1	PC	SNA
N0011	DC61-60067C	CLAMPER HOSE	-,SK5,-,ID15.5,WHT,-	1	PC	SNA
P0009	DC97-08650G	ASSY SEMI TUB FRONT	SEW-HFR167ATS,PUMP A	1	PC	SA
P0111	DC97-12747A	ASSY GUIDE WATER	FRONTIER II,WF337LAW,-,	1	PC	SA
Q0001	DC97-03716C	ASSY SENSOR PRESSURE	SEW-3HW123,-,-,DN-S	1	PC	SA
R0001	DC97-12604B	ASSY DRUM	SEW-HFR179ATS,FRONTIER2MC-PJT,	1	PC	SA
R0001	DC97-12528A	ASSY FLANGE SHAFT	FRONTIER II,-,-,-,-	1	PC	SA
R0002	DC66-00451A	DRUM-FRONT	ZEUS-PJT,STS430,-,OD582,ID400	1	PC	SNA
R0003	DC66-00485A	DRUM-WRAPPER	WF337AAR/XAA,STS430,-,OD561	1	PC	SNA
R0005	DC66-00452A	DRUM-BACK	ZEUS-PJT,STS430,-,OD582,ID581,	1	PC	SNA
R0006	DC66-00453A	DRUM-LIFTER	ZEUS-PJT,PP(TI42),-,L314.2	3	PC	SA
R0175	DC97-04981D	ASSY CLAMP DIAPHRAGM	WINGS-PJT,-,-,HSWR/	1	PC	SA
S0058	DC97-12135A	ASSY BALANCER	ZEUS-PJT,-,-,-,-	2	PC	SA
U0013	DC97-11520F	ASSY TUB BACK	SEW-HFW179ATR,NO VENT/ NO	1	PC	SNA
U0016	DC62-00156A	SEAL-OIL	TS85-PJT,NBR(SD45.5),BLK,-,-,-	1	PC	SA
U0021	DC97-12514A	ASSY DIAPHRAGM	SEW-HFR177AR,MACH-PJT,-,-	1	PC	SNA
U0026	DC97-07131N	ASSY TUB FRONT	SEW-HVR167ATS,MACH/FRONTI	1	PC	SNA
U0029	DC64-01313A	DOOR-DIAPHRAGM	SEW-HFR177AR,EPDM,T1.5,-,	1	PC	SA
U0031	DC67-00318A	CAP-DIAPHRAGM	MACH-WAHER,FRPP,T2.5,W161,	1	PC	SA
U0051	DC97-02412A	ASSY BOLT	SWF-P12,MOTOR/ M8*L62,-,-,-,-	4	PC	SA
U0086	DC67-00139A	WEIGHT-BALANCER(F)	GW-PJT,GC,-,-,-,RED,F	2	PC	SA
U0092	DC97-11526E	ASSY SEMI TUB BACK	SEW-HFW179ATR,NO VENT	1	PC	SNA

**MODEL CODE: WF8120SXW/XEG**

Service Bom (SA: SERVICE AVAILABLE, SNA: SERVICE NOT AVAILABLE)

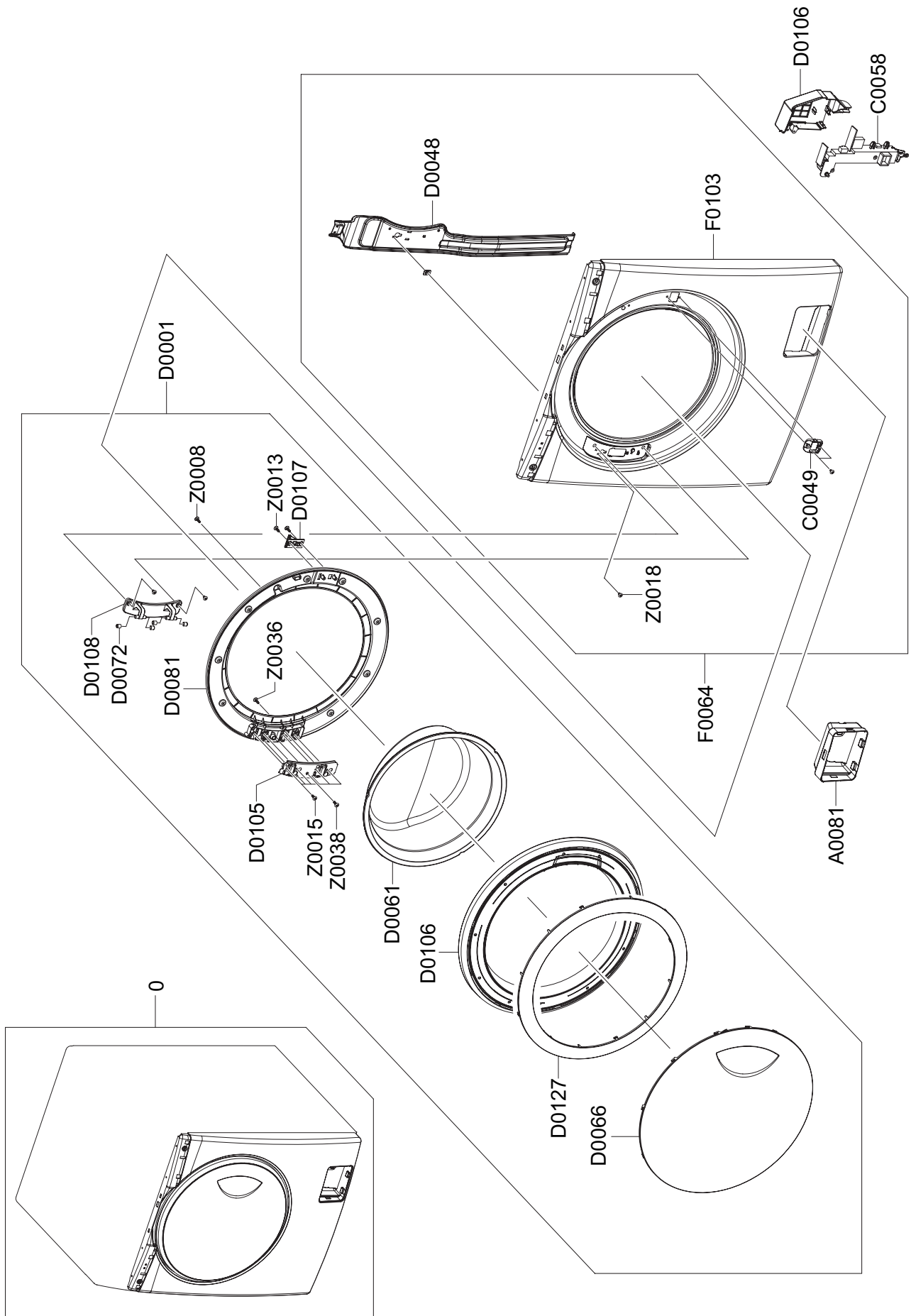
SVC Code	Code No.	Description	Specification	QTY	Un	SA/SNA
U0112	DC61-01338B	BRACKET-HOUSING BEARING	DR130,SBHG1-A,T1	1	PC	SNA
U0133	DC66-00343C	DAMPER-SHOCK	GW-PJT,-,-,-,-,-,60N	2	PC	SA
U0133	DC66-00343E	DAMPER-SHOCK	GW-PJT,STEEL+PP+RUBBER,40N,	2	PC	SA
U0174	DC67-00301A	HOSE-AIR PUMP	FRONTIER 2 MC,EPDM,ID19.5,	1	PC	SA
U0184	DC97-14805A	ASSY TUB&DRUM	SEW-HFR179ATR,NO VENT/ NO	1	PC	SNA
U0203	DC62-00229A	NOZZLE-DIAPHRAGM	SEW-6HR122A,FRPP,-,-,-,	1	PC	SA
U0320	DC60-40141A	BOLT-HEX	SM10C/DAMPER,HEX,M8,L66,-,ZPC2	2	PC	SA
U0320	DC60-40137A	BOLT-HEX	MARS-PJT,STS430,M8,-,P1.25,L30	6	PC	SA
U0320	6011-001644	BOLT-HEX	M10,L40,ZPC2(YEL),SM10C,DAMPER	5	PC	SA
U0353	DC60-60044A	WASHER-PLAIN	-,ID10.5,OD30,T3,-,STS304	1	PC	SNA
U0353	DC60-60044A	WASHER-PLAIN	-,ID10.5,OD30,T3,-,STS304	2	PC	SNA
U0353	DC60-60044A	WASHER-PLAIN	-,ID10.5,OD30,T3,-,STS304	2	PC	SNA
U0354	6031-001523	WASHER-WAVE	SK5,-,ID35,OD45,T0.6,ZPC2,-	1	PC	SA
U0358	DC47-00006Q	HEATER	-,SUS 316L,2000W,9.1A,220V,2	1	PC	SA
U0359	DC61-01482A	BRACKET-HEATER	GW-PJT,STS430/304,T0.5,W9	1	PC	SNA
U0362	DC60-60049A	WASHER-SPRING	-,ID10.5,OD18,T2.5,-,SIR	1	PC	SA
U0363	DC63-00820A	COVER-HEATER	WF337AAW,PP(V0),-,-,-,-,-	1	PC	SNA
U0363	DC65-20008C	CABLE CLAMP	DA-8N,-,ID13.2/T1.0,NYLON#66	2	PC	SA
U0364	DC69-00804A	PACKING-TUB	GW-PJT,EPDM-FORM,-,PI8,W624,	1	PC	SA
U0385	DC61-01431B	BRACKET-TUB(B)	FRONTIER,SBHG1-A,T0.35,-,	1	PC	SNA
W0005	DC96-01417C	ASSY HEATER	SEW-HFR167,COVER+DC47-00006Q	1	PC	SNA
W0021	DC97-04973B	ASSY WIRE DIAPHRAGM	SEW-HFR167AR,-,-,STS	1	PC	SA
W0031	DC72-00001A	BAND-RING	DRUM-MODEL,HSWR,-,-,-,YEL,ID65	1	PC	SA
W0062	DC90-10128H	ASSY THERMISTOR	KS-PJT,RUBBER ADD,-,-	1	PC	SA
Z0004	DC60-50148B	NUT-HEX	SM20C(NYLON),M12,-,-,ZPC3(YEL)	1	PC	SA

---

**MEMO**

---

5-4. ASS'Y FRAME FRONT & DOOR

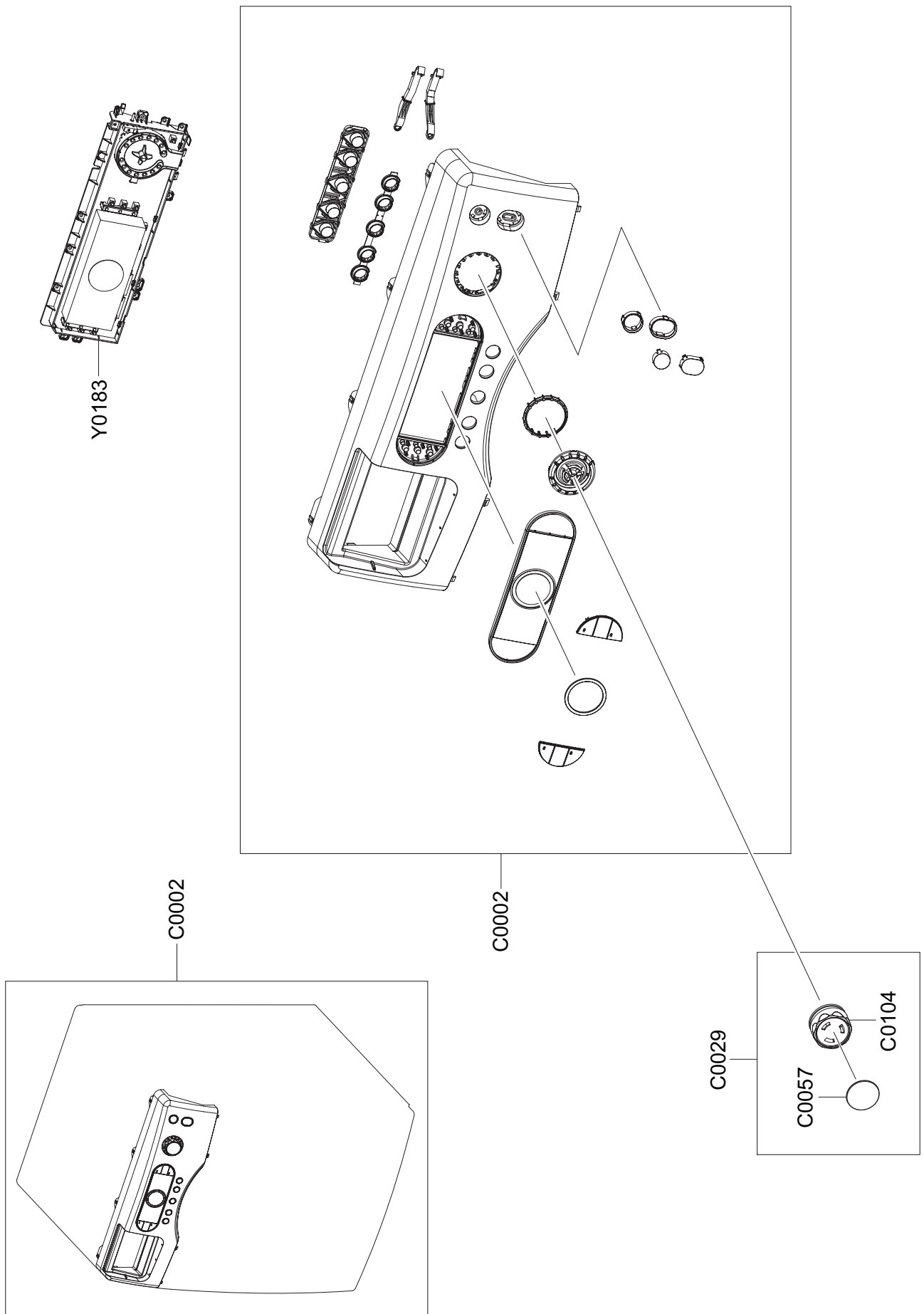


## MODEL CODE: WF8120SXW/XEG

Service Bom (SA: SERVICE AVAILABLE, SNA: SERVICE NOT AVAILABLE)

SVC Code	Code No.	Description	Specification	QTY	Un	SA/SNA
A0081	DC61-01696A	GUIDE-COVER FILTER	SEW-HFR177AR,PP,-,-,-	1	PC	SNA
C0049	DC63-00960A	COVER-SWITCH(O)	WF218,POM,T3,-,-,-,NAT	1	PC	SA
D0001	DC97-14934A	ASSY DOOR	FRONTIER4,WF218,-,-,-,-	1	PC	SA
D0048	DC61-02031A	BRACKET-HINGE	MACH,GI,T1.2,W39.5,L213,-,	1	PC	SA
D0061	DC64-00504A	DOOR-GLASS	TS85-PJT,SODALIME,-,-,-,-,N	1	PC	SC
D0066	DC64-01614A	DOOR-SAFETY	FRONTIER4,PET,T2.5,H43,W512,	1	PC	SA
D0072	DC61-00891A	GUIDE-HINGE	HAUZEN(DOM),POM,-,-,-,WHT,HI	4	PC	SA
D0081	DC61-02035A	HOLDER-GLASS	FRONTIER4,PP,T2.8,W541,L541	1	PC	SA
D0105	DC61-01576A	SUPPORT-HINGE	FRONTIER-PJT,SBHG1-A(SGCC)	1	PC	SA
D0106	DC63-00890A	COVER-DOOR	FRONTIER4,ABS,T2.5,W541,L541,	1	PC	SA
D0106	DC63-00693A	COVER-DOOR SWITCH	FRONTIER,PP(V0),-,-,-,	1	PC	SA
D0106	DC64-00519A	DOOR-LOCK S/W	DW100,NYLON,-,-,-,-,WHT,VD	1	PC	SA
D0107	DC66-00326A	LEVER-DOOR	TS85-PJT,POM,-,W24,L54,-,WHT,	1	PC	SA
D0108	DC61-01532B	HINGE-DOOR	WF328,ALDC,T3.8,-,-,GRY,-,SPR	1	PC	SA
D0127	DC64-01366B	DECORATION-DOOR	DV337AEW,STS430,-,-,-,-,	1	PC	SNA
F0064	DC97-15391J	ASSY FRAME FRONT	FRONTIER2MC,WF8120SXW/X	1	PC	SA
F0103	DC61-01518M	FRAME-FRONT	WF218ANW,EGI,-,-,WHT,T0.8,L2	1	PC	SA
Z0008	6002-000444	SCREW-TAPPING	TH,+,-,2S,M4,L14,PASS,STS4	13	PC	SA
Z0013	6002-001279	SCREW-TAPPING	PWH,+,-,1,M4,L12,PASS,STS3	2	PC	SA
Z0015	6002-001306	SCREW-TAPPING	TH,+,-,1,M4,L14,ZPC(WHT),S	8	PC	SNA
Z0018	6003-000226	SCREW-TAPTITE	TH,+,-,S,M4,L8,ZPC(WHT),SW	1	PC	SC
Z0036	6001-001668	SCREW-MACHINE	TH,+,-,M5,L16,PASS,STS430,FP	1	PC	SA
Z0038	6002-000241	SCREW-TAPPING	TH,+,-,2S,M5,L12,ZPC(WHT),	1	PC	SA
5.4-0		ASSY-FRAME FRONT & DOOR		1		

5-5. ASS'Y PANEL CONTROL

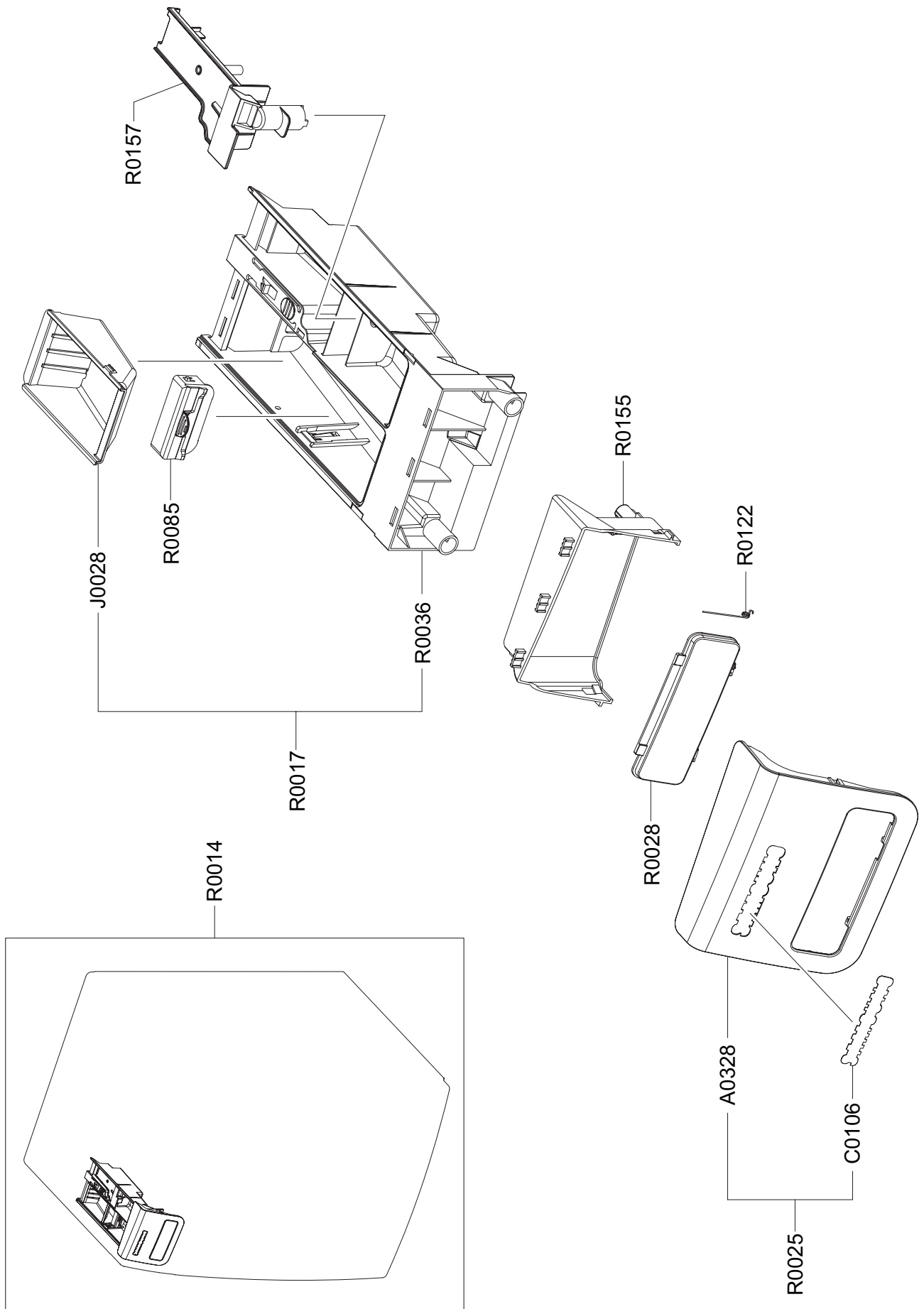


---

**MODEL CODE: WF8120SXW/XEG**Service Bom (**SA**: SERVICE AVAILABLE, **SNA**: SERVICE NOT AVAILABLE)

SVC Code	Code No.	Description	Specification	QTY	Un	SA/SNA
C0002	DC97-12607Y	ASSY S.PANEL CONTROL	FRONTIER2MC-GLOBAL,	1	PC	SA
C0002	DC97-12597Y	ASSY PANEL CONTROL	FRONTIER2MC-GLOBAL,WF	1	PC	SNA
C0029	DC97-12954C	ASSY KNOB ENCODER	WF337AAW/XAA,NEW,-,-,-	1	PC	SA
C0057	DC64-01358A	DECORATION-ENCODER	WF337AAW,ALDC,T2.0,-,	1	PC	SNA
C0104	DC64-01472B	KNOB-ENCODER	WF203ANS,ABS,-,-,-,SKIPPY	1	PC	SNA
Y0183	DC92-00137C	ASSY PCB SUB	F2MC-GLOBAL,WF8120SXW/XEG,-	1	PC	SA

5-6. ASS'Y DRAWER



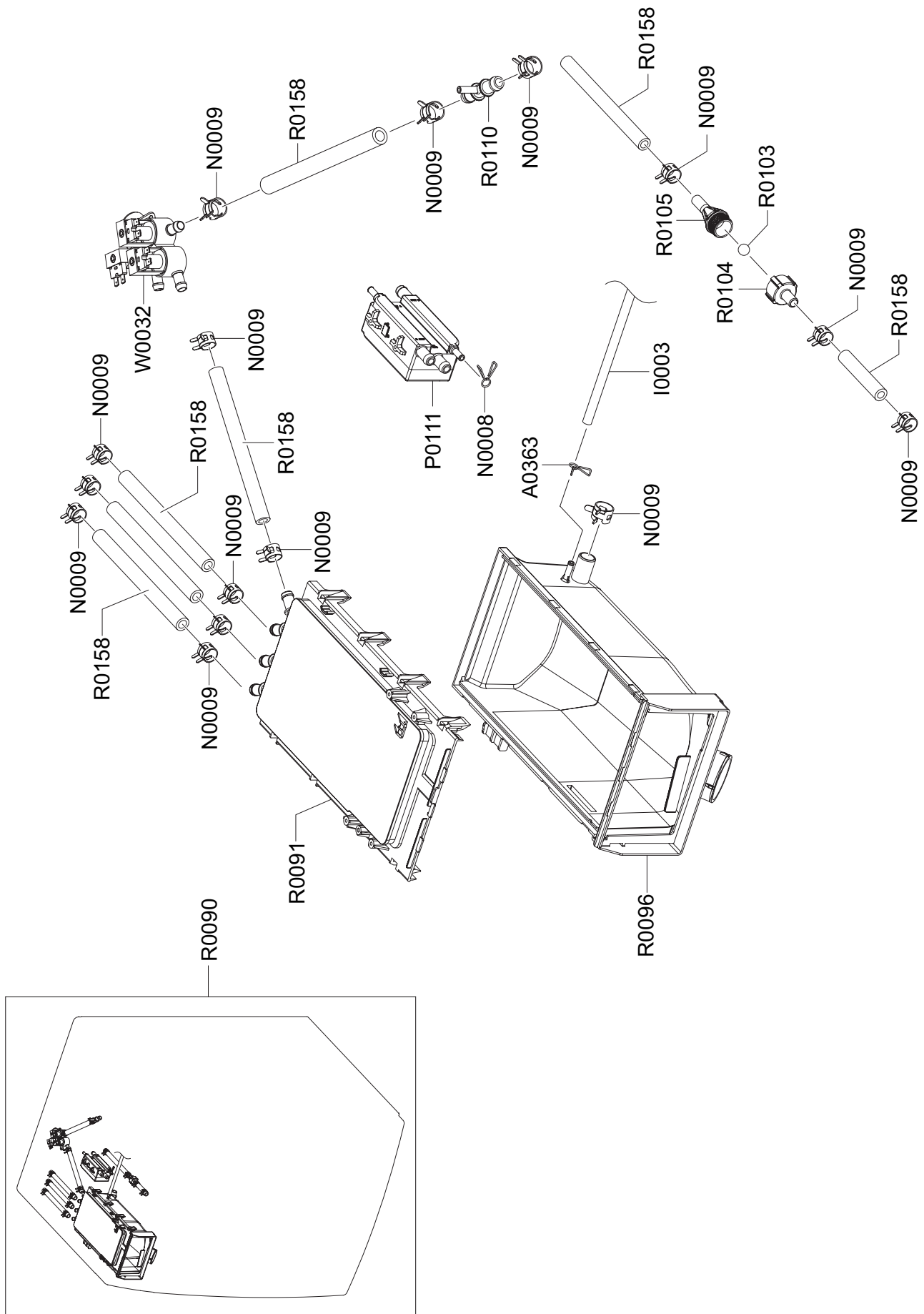


---

**MODEL CODE: WF8120SXW/XEG**Service Bom (**SA**: SERVICE AVAILABLE, **SNA**: SERVICE NOT AVAILABLE)

SVC Code	Code No.	Description	Specification	QTY	Un	SA/SNA
A0028	DC63-00774A	COVER-DRAWER	FRONTIER II,ABS,-,-,-,-,-,-	1	PC	SNA
A0328	DC64-01355A	PANEL-DRAWER	FRONTIER II,ABS,-,-,-,-,-,-	1	PC	SNA
C0106	DC64-01387A	MASCOT	FRONTIER II,NICKEL,-,-,-,-,-,-	1	PC	SNA
J0028	DC61-01267A	CASE-PRE WASH	WINGS-PJT,PP(TB53),-,-,-,W	1	PC	SC
R0014	DC97-12610M	ASSY DRAWER	F2 MC/EXP,WF8120SXW,WHITE,-,	1	PC	SA
R0017	DC97-08774A	ASSY S.DRAWER	MAH9700AWW,-,-,-,-,-,-	1	PC	SA
R0025	DC97-12611A	ASSY PANEL DRAWER	WF327LAW,FRONTIER II,-	1	PC	SA
R0036	DC61-01170A	BODY-DRAWER	GW-PJT,PP(TB-53),-,-,-,-,WHT	1	PC	SNA
R0085	DC61-01171A	GUIDE-LIQUID	GW-PJT,ABS,-,-,-,-,WHT,-	1	PC	SA
R0122	DC61-01577A	SPRING-DRAWER	FRONTIER,HSWR,C/D 0.8,I/D	1	PC	SNA
R0155	DC64-01356A	HANDLE-DRAWER	FRONTIER II,ABS,-,-,-,-,-,-	1	PC	SNA
R0157	DC67-00247B	CAP-RINSE	WF8140NYG/YL,PP,-,-,-,-,UNSELL 5	1	PC	SA

## 5-7. HOUSING DRAWER



---

**MODEL CODE: WF8120SXW/XEG**Service Bom (**SA**: SERVICE AVAILABLE, **SNA**: SERVICE NOT AVAILABLE)

SVC Code	Code No.	Description	Specification	QTY	Un	SA/SNA
A0363	DC61-70029D	SPRING ETC-CLIP	WF337,HSWR67,CD1.6,ID8.5	1	PC	SA
I0003	DC67-00089F	HOSE-WATER	WF328AAW,TPE,ID5,OD9,T2,L190,	1	PC	SA
N0008	DC61-70029C	SPRING-CLIP	SEW-HW125,HSWR67,CD1.2,ID8.5	1	PC	SA
N0009	DC65-00008A	CLAMPER HOSE	SEW-DR605,SK5,-,-,YEL,ID14.	14	PC	SNA
P0111	DC97-14728A	ASSY GUIDE WATER	FRONTIER3,WF328AAW,-,-	1	PC	SA
R0090	DC97-07125U	ASSY HOUSING DRAWER	FRONTIER2MC-GLOBAL,W	1	PC	SNA
R0091	DC97-08800A	ASSY S.HOUSING DRAWER	MAH9700AWW,-,-,-,-	1	PC	SA
R0096	DC61-01167E	HOUSING-DRAWER(L)	WF8120SXW/XEG,PP(FH44N	1	PC	SNA
R0103	DC62-00167A	NOZZLE-BALL	Q1636GW,SILICON,-,-,-,-,TS	2	PC	SA
R0104	DC62-00183A	NOZZLE-CONNECTOR(L)	Q1636,PC,D24,-,-,-,T	2	PC	SA
R0105	DC62-00182A	NOZZLE-CONNECTOR(U)	Q1636,PC,D24,-,-,-,T	2	PC	SA
R0110	DC62-00176A	PIPE-CONNECTOR	SEW-HW125,TB53,ID4.3,OD8.	1	PC	SA
R0158	DC67-00051B	HOSE-DRAWER	Q1636GW/XEU,EPDM,ID9.0,OD14.	1.15	M	SA
W0032	DC62-30027A	VALVE-WATER	Mach-Washer,PP J320,-,0~12Kg	1	PC	SA

## 5-8. PARTS LIST (SA/SC OTHERS)

### MODEL CODE: WF8120SXW/XEG

Service Bom (SA: SERVICE AVAILABLE, SNA: SERVICE NOT AVAILABLE)

SVC Code	Code No.	Description	Specification	QTY	Un	SA/SNA
A0015	DC69-00935J	PACKING CASE-DESIGN	WF218ANW,PPR-OTH,DW3	1	PC	SA
D0111	DC72-00034B	SPONGE-EPDM	MAH2400,EPDM,-,T1,W15,L500,W	3	PC	SA
U0097	6011-001627	BOLT-ETC	M6,L56,MFZn,SCM435,P1.0/HEX/WS	6	PC	SA
U0097	6011-001548	BOLT-ETC	M7.5,L30,ZPC(YEL),SWRCH18A,HEX	20	PC	SA
W0059	DC72-00013J	SPONGE-HARNESS	SEW-5G105A,PU-FOAM,-,T5.0	2	PC	SA
Z0006	6002-000213	SCREW-TAPPING	TH,+,-,1,M4,L12,ZPC(WHT),S	10	PC	SA
Z0006	6002-000213	SCREW-TAPPING	TH,+,-,1,M4,L12,ZPC(WHT),S	8	PC	SA
Z0006	6002-000213	SCREW-TAPPING	TH,+,-,1,M4,L12,ZPC(WHT),S	2	PC	SA
Z0006	6002-000213	SCREW-TAPPING	TH,+,-,1,M4,L12,ZPC(WHT),S	3	PC	SA
Z0006	6002-000213	SCREW-TAPPING	WF203,-,SCREW-TAPPING,-,M4/L1	5	PC	SA
Z0008	6002-000444	SCREW-TAPPING	TH,+,-,2S,M4,L14,PASS,STS4	3	PC	SA
Z0008	6002-000444	SCREW-TAPPING	TH,+,-,2S,M4,L14,PASS,STS4	1	PC	SA
Z0027	6001-001773	SCREW-MACHINE	TH,+,-,M5,L12,PASS,STS430,	2	PC	SA
Z0040	DC97-09193A	ASSY SCREW	-,MDG9700AWW,-,-,NUT-CIRCULAR	2	PC	SA
Z0040	DC97-14006A	ASSY SCREW	WF203,-,SCREW-TAPPING,-,M4/L1	2	PC	SA
Z0040	6002-001186	SCREW-TAPPING	TH,+,-,2,M5.5,L16,PASS,STS	15	PC	SA
Z0047	6009-001317	SCREW-SPECIAL	CH,+,-,M4,L10,ZPC(WHT),SWR	2	PC	SA
Z0048	6009-001476	SCREW-HEX	HEX,+,-,M5,L10,ZPC3(BLK),SWRCH	2	PC	SA
Z0054	6009-001367	SCREW-HEX	HWH,+,-,M6.5,L32,ZPC(WHT),SWRC	12	PC	SA
Z0018	6003-000226	SCREW-TAPTITE	TH,+,-,S,M4,L8,ZPC(WHT),SW	2	PC	SC
Z0018	6003-000226	SCREW-TAPTITE	TH,+,-,S,M4,L8,ZPC(WHT),SW	4	PC	SC

## 5-9. PARTS LIST (SCREW TYPE)

### MODEL CODE: WF8120SXW/XEG

Service Bom (SA: SERVICE AVAILABLE, SNA: SERVICE NOT AVAILABLE)

SVC Code	Code No.	Description	Specification	QTY	Un	SA/SNA
Z0006	6002-000213	SCREW-TAPPING	TH,+,-,1,M4,L12,ZPC(WHT),S	29	PC	SA
Z0008	6002-000444	SCREW-TAPPING	TH,+,-,2S,M4,L14,PASS,STS4	17	PC	SA
Z0013	6002-001279	SCREW-TAPPING	PWH,+,-,1,M4,L12,PASS,STS3	2	PC	SA
Z0015	6002-001306	SCREW-TAPPING	TH,+,-,1,M4,L14,ZPC(WHT),S	14	PC	SNA
Z0018	6003-000226	SCREW-TAPTITE	TH,+,-,S,M4,L8,ZPC(WHT),SW	7	PC	SC
Z0020	6006-001174	SCREW-TAPPING	TH,+WE,-,M4,L12,ZPC(WHT),	31	PC	SNA
Z0027	6001-001773	SCREW-MACHINE	TH,+,-,M5,L12,PASS,STS430,	2	PC	SA
Z0036	6001-001668	SCREW-MACHINE	TH,+M5,L16,PASS,STS430,FP	1	PC	SA
Z0038	6002-000241	SCREW-TAPPING	TH,+,-,2S,M5,L12,ZPC(WHT),	1	PC	SA
Z0040	6002-001186	SCREW-TAPPING	TH,+,-,2,M5.5,L16,PASS,STS	15	PC	SA
Z0040	DC97-09193A	ASSY SCREW	-,MDG9700AWW,-,-,NUT-CIRCULAR	2	PC	SA
Z0040	DC97-14006A	ASSY SCREW	WF203,-,SCREW-TAPPING,-,M4/L1	2	PC	SA
Z0047	6009-001317	SCREW-SPECIAL	CH,+,-,M4,L10,ZPC(WHT),SWR	2	PC	SA
Z0048	6009-001476	SCREW-HEX	HEX,+,-,M5,L10,ZPC3(BLK),SWRCH	2	PC	SA
Z0054	6009-001367	SCREW-HEX	HWH,+,-,M6.5,L32,ZPC(WHT),SWRC	12	PC	SA
Z0062	6002-000524	SCREW-TAPPING	TH,+,-,2,M4,L20,ZPC(WHT),S	1	PC	SNA