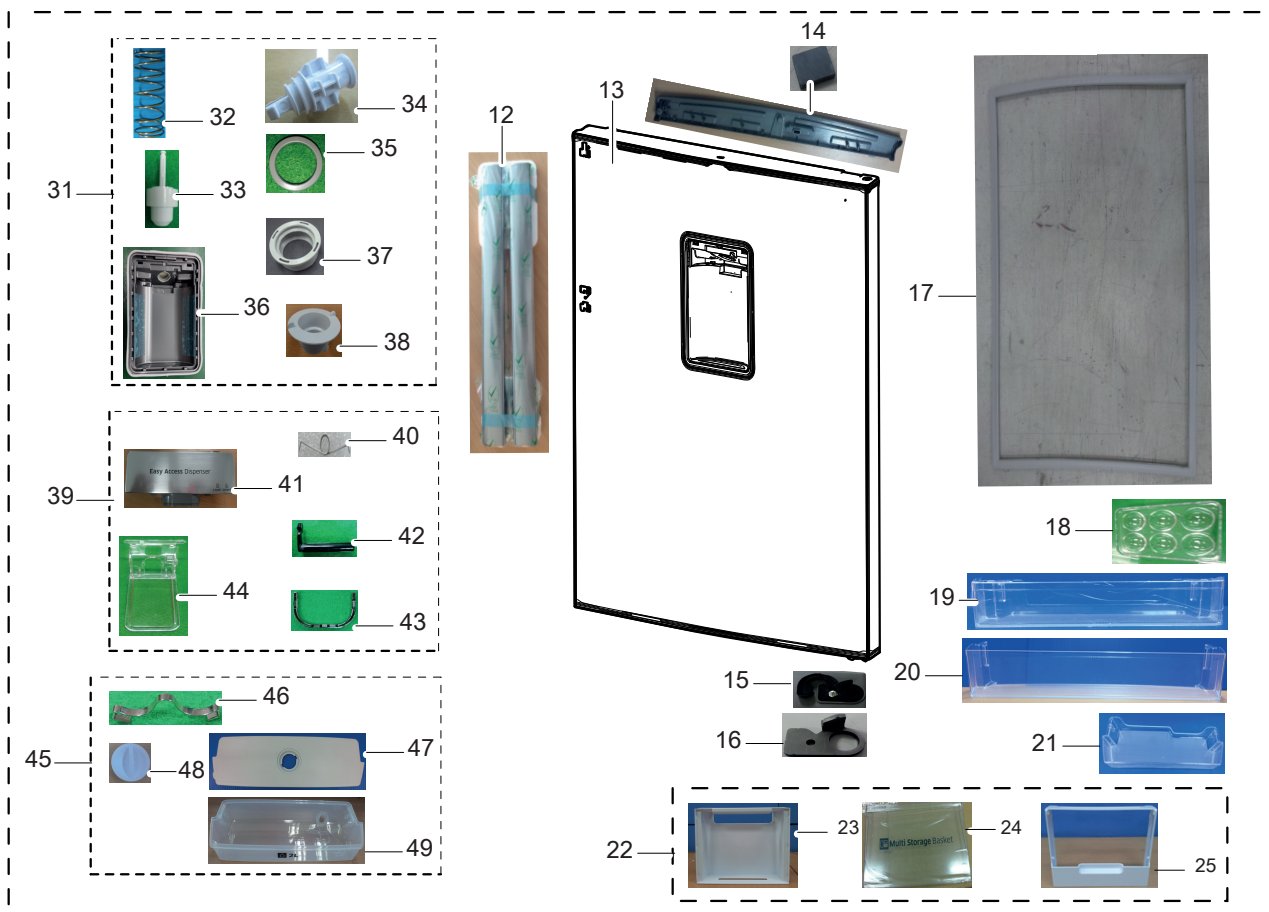
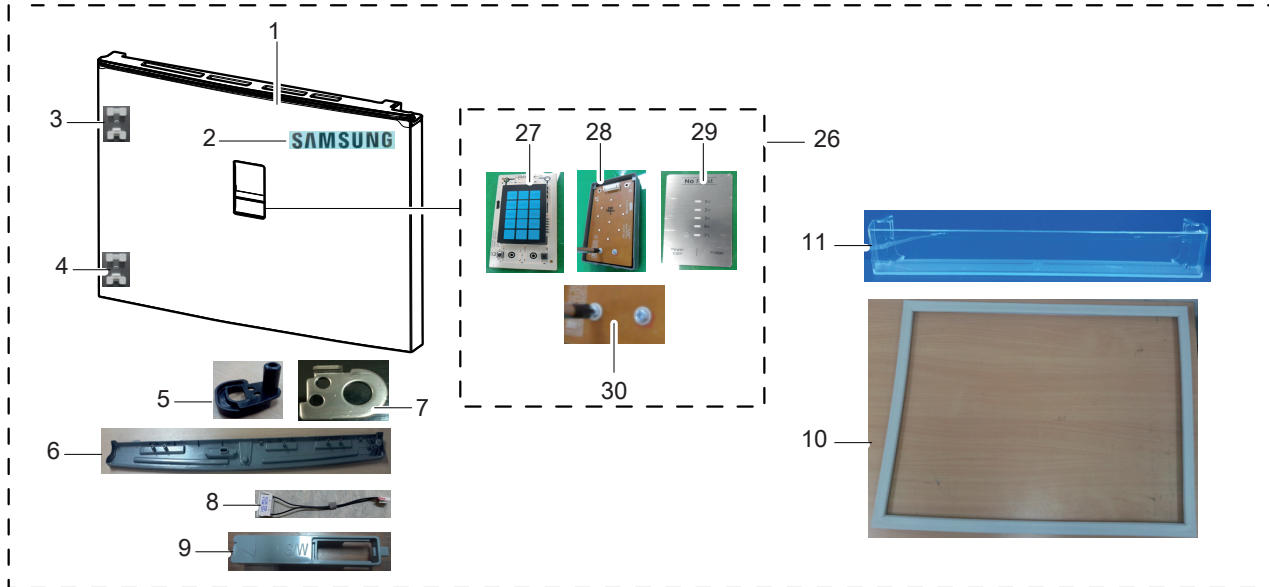


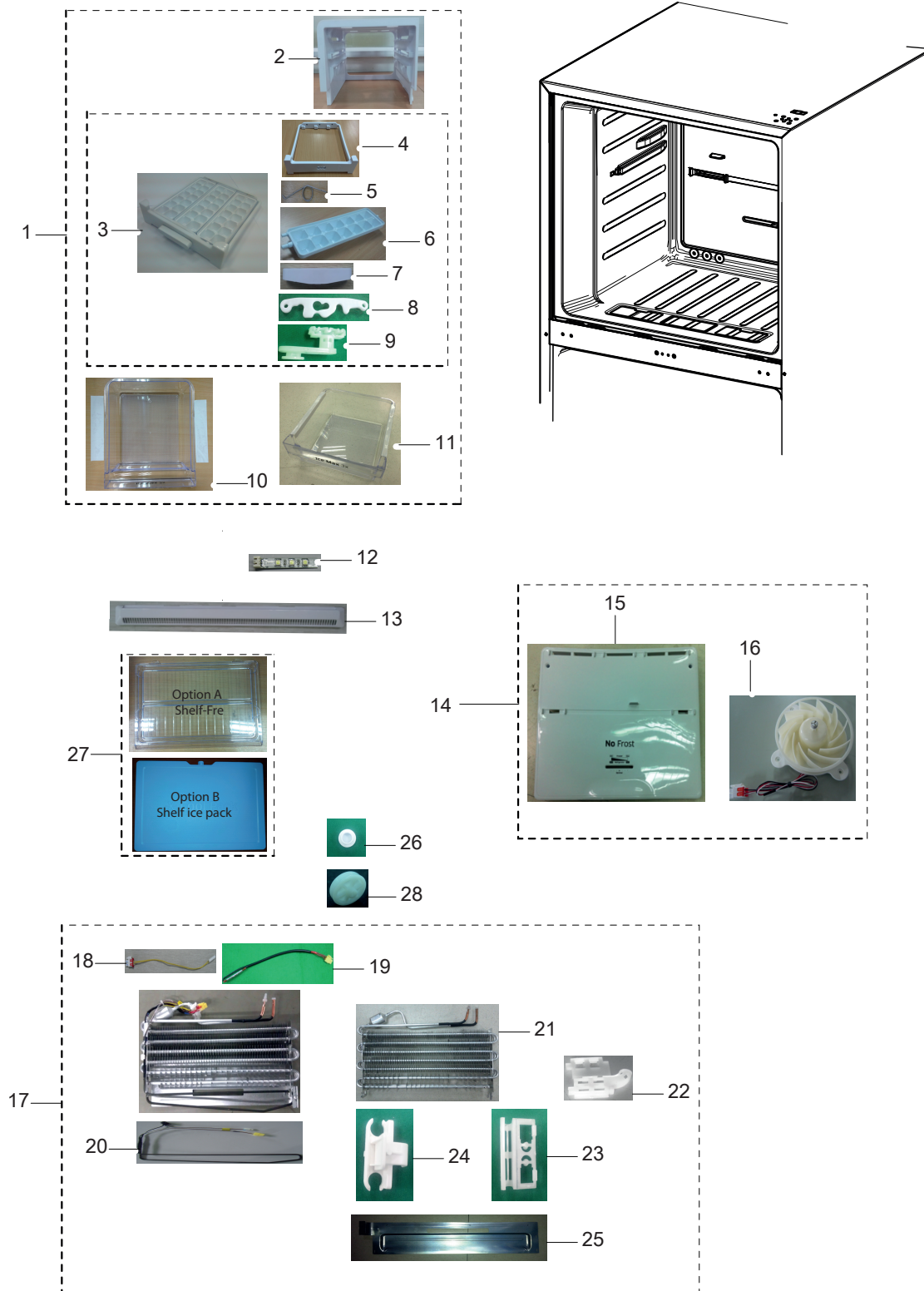
Door compartment



PART LIST OF DOOR : RT53H6630SL/EF

| No. | Code No. | Lvl. | Loc. | Description | Specification | Qty | SA/SNA |
|-----|-------------|------|-------|-----------------------|---------------------------------|-----|--------|
| 1 | DA91-04144B | 2 | M0063 | ASSY DOOR FOAM-FRE | RT-H530GSL (EZ Clean | 1 | SA |
| 2 | DA64-04020A | 3 | M0196 | MASCOT | ALL,NI,-,TO.06,L80 | 1 | SA |
| 3 | DA61-08699A | 4 | - | FIXER-HANDLE A | MT12,PP+GLASS,NTR,RIVET | 1 | SNA |
| 4 | DA61-08700A | 4 | - | FIXER-HANDLE B | MT12,PP+GLASS,NTR,RIVET | 1 | SNA |
| 5 | DA63-06734B | 4 | - | GROMMET HINGE-FRE LOW | RT-H530G,POM,BLACK | 1 | SA |
| 6 | DA67-03794A | 4 | A0070 | CAP DOOR-FRE LOW | RT-H530G,ABS,HB,HG-0760 | 1 | SNA |
| 7 | DA71-40137A | 4 | A0597 | STOPPER-DOOR | STS304,-,T2.0 | 1 | SA |
| 8 | DA34-00043J | 2 | - | SWITCH REED | UL1007 AWG 22,50mm,DEM1-B503 | 1 | SA |
| 9 | DA67-02385M | 2 | - | CAP SWITCH-REED | 3050-PJT,PP,HB,BJ750,INO | 1 | SA |
| 10 | DA97-13921H | 2 | - | ASSY GASKET-FRE | RT53/RT50,GRAY,W728,L502 | 1 | SA |
| 11 | DA63-07697A | 2 | A0711 | GUARD-FRE | RT53/RT50,GPPS,TP BLUE | 2 | SA |
| 12 | DA97-14425A | 3 | A0553 | ASSY-HANDLE | RT53/50/46/43,ALF,INOX-GRAY, | 2 | SA |
| 13 | DA91-04140B | 2 | Z1100 | ASSY DOOR FOAM-REF | RT-H530G,SL (EZ Clean | 1 | SA |
| 14 | DA61-03769B | 4 | A0534 | MAGNET | SVETA,MAGNET,T5,W15,L18 | 1 | SA |
| 15 | DA61-00589B | 4 | - | STOPPER DOOR-REF LOW | TT-PJT,NO-DIS,POM,W | 1 | SA |
| 16 | DA61-09633A | 4 | - | STOPPER-REF | 3050-2,PO-SPHC,T4.0,- | 1 | SA |
| 17 | DA97-13921J | 2 | - | ASSY GASKET-REF | RT53,GRAY,W730,L1162 | 1 | SA |
| 18 | DA63-07346A | 2 | A0656 | TRAY EGG | 3050,GPPS,-,HB,TP BLUE,165N,HI- | 2 | SA |
| 19 | DA63-07704A | 2 | - | GUARD-REF RIGHT | RT53/RT50,GPPS,TP BLUE,D | 2 | SA |
| 20 | DA63-07701A | 2 | A0713 | GUARD-JUMBO | RT53/RT50,GPPS,TP BLUE | 1 | SA |
| 21 | DA63-07703A | 2 | G0283 | GUARD-DISPENSER | RT53/RT50,GPPS,TP BLUE,D | 1 | SA |
| 26 | DA97-13300T | 2 | A0626 | ASSY COVER CONTROL | RT53/50/46/43,UV Inox | 1 | SA |
| 27 | DA92-00464E | 3 | - | ASSY MODULE | LED DISPLAY MODULE,RT-H530G, | 1 | SA |
| 28 | DA63-07296A | 3 | A1196 | COVER-CONTROL | 3050,ABS,HB,INOX GRAY,HG-0 | 1 | SA |
| 29 | DA64-04377K | 3 | - | INLAY-CONTROL | RT53/50/46/43,PC,NATURAL,T | 1 | SA |
| 30 | 6002-000470 | 2 | G0412 | SCREW-TAPPING | TH,+ ,NO,1,M4,L10,ZPC(WHT), | 3 | SNA |
| 31 | DA97-11229A | 3 | M0353 | ASSY-COCK DISPENSER | TWIN, MT, TD09, NW2- | 1 | SA |
| 32 | DA61-03991A | 4 | M0217 | SPRING ETC-DISPENSER | MT-PJT,STS304,-,-,- | 1 | SNA |
| 33 | DA61-08930A | 4 | - | GUIDE-PIN | MT12,ABS,WHITE | 1 | SNA |
| 34 | DA61-09941A | 4 | - | GUIDE-MIDDLE | ABS,HB,HG-0760GP,COOL WHITE | 1 | SNA |
| 35 | DA63-04067A | 4 | - | GASKET-WATER TANK | MT-PJT,SI,3,DARK GRAY | 1 | SNA |
| 36 | DA97-14551A | 3 | - | ASSY CASE DISPENSER | RT-H530G,INOX METAL, | 1 | SNA |
| 37 | DA62-03465A | 4 | M0382 | VALVE | TD,SILICON,DARK GRAY | 1 | SA |
| 38 | DA67-03565A | 2 | - | CAP-COCK | MT12,PP,T1.0,W60,L60,27.7,BJ730 | 1 | SA |
| 39 | DA97-14562A | 2 | - | ASSY COVER DISPENSER | RT-H530G,HOT STAMPI | 1 | SA |
| 40 | DA61-05708B | 3 | M0022 | SPRING ETC-LEVER | NW2-FDR,STS304WPB,D8.1, | 1 | SNA |
| 41 | DA63-07719A | 3 | M0027 | COVER DISPENSER | RT53/50/46/43,ABS,HB,INO | 1 | SNA |
| 42 | DA64-02391B | 3 | M0034 | KEY-LEVER | MT12,POM,40.5*15.3,7,3,BLACK | 1 | SNA |
| 43 | DA64-04322A | 3 | - | TRIM-DISPENSER | MT12,ABS,MP-0140,W41.9,L6 | 1 | SNA |
| 44 | DA66-00986A | 3 | M0412 | LEVER-DISPENSER | MT12,PC,NATURAL | 1 | SNA |
| 45 | DA97-14332A | 2 | M0042 | ASSY TANK WATER | RT53/RT50,DISPENSER | 1 | SA |
| 46 | DA61-04445A | 3 | - | SPRING ETC-WATER TANK | MT-PJT,SK5 | 2 | SA |
| 47 | DA63-07708A | 3 | - | COVER WATER TANK | RT53/RT50,PE,HB,COOL WH | 1 | SA |
| 48 | DA67-01054C | 3 | M0357 | CAP-WATER TANK | TD09-PJT,PP,COOL WHITE,SC | 1 | SNA |
| 49 | DA67-03806A | 3 | M0039 | TANK WATER | RT53/RT50,PP,NATURAL,DISPENSE | 1 | SA |

Freezing compartment



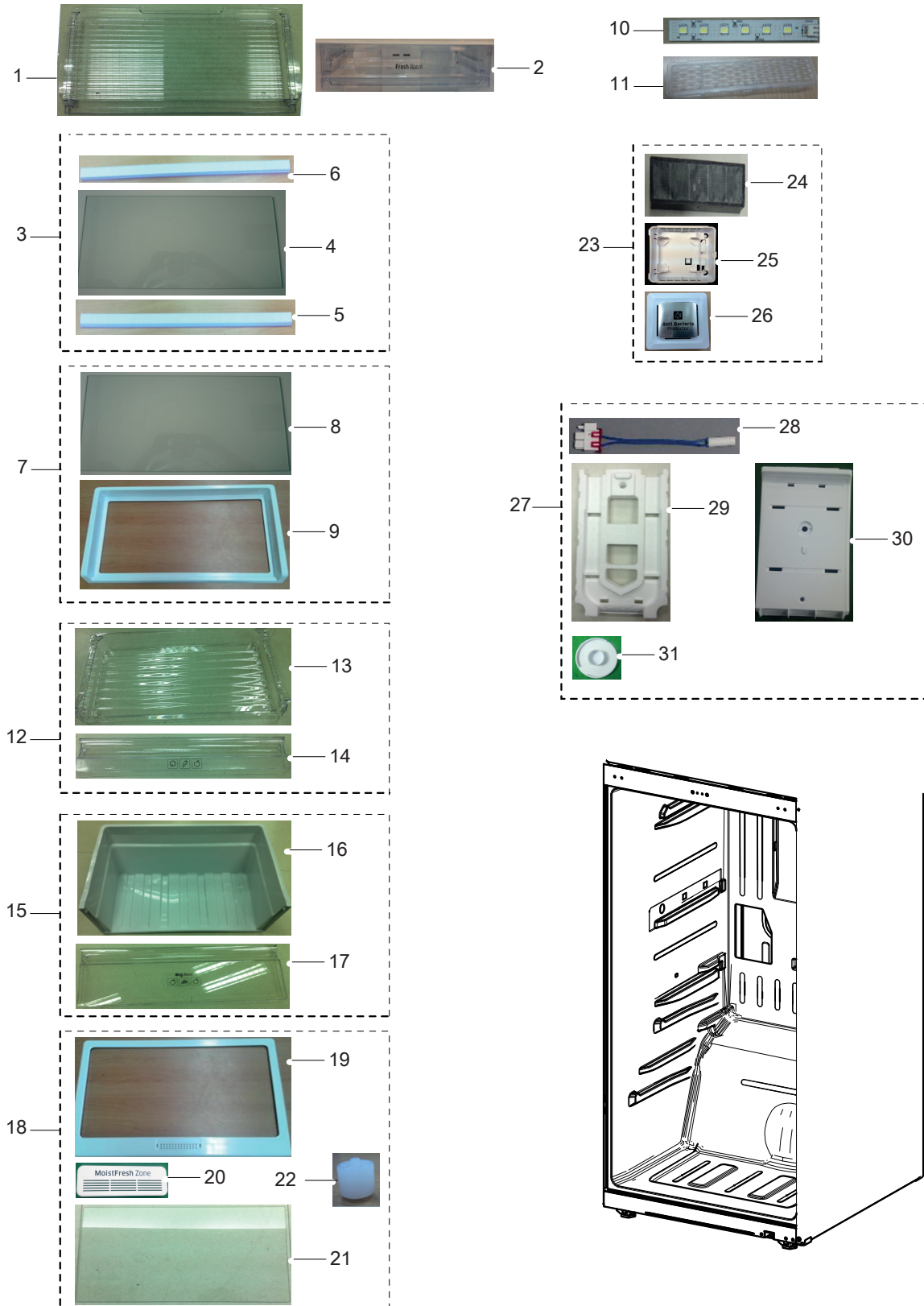
PART LIST OF FREEZER : RT53H6630SL/EF

| No. | Code No. | Lvl. | Loc. | Description | Specification | Qty | SA/SNA |
|-----|-------------|------|-------|----------------------|---------------------------------|-----|--------|
| 1 | DA90-07941B | 2 | - | ASSY ICE MAKER-L | 3050-2,GPPS BLUE,MANUAL | 1 | SNA |
| 2 | DA61-08910A | 3 | - | SUPPORT-TRAY ICE L | RT380,HIPS,S834S1,COO | 1 | SA |
| 3 | DA97-13500A | 3 | A0107 | ASSY TRAY-ICE | RT38/35/32/29,COOL,3 TWIST | 1 | SC |
| 4 | DA61-08906A | 4 | A0718 | CASE-TRAY ICE | RT38/35/32/29,3-TWIST,PP,C | 1 | SA |
| 5 | DA61-20136A | 4 | - | SPRING ETC-ICE MAKER | SR-53EA,STS304,COIL | 2 | SA |
| 6 | DA63-07337A | 4 | A0120 | TRAY ICE | 3050,TMF,PP,T1.0,-,COOL WHITE,1 | 3 | SA |
| 7 | DA64-04461A | 4 | A0118 | KNOB-TRAY ICE | 3050 TMF,ABS,2.0,COOL WHTI | 1 | SA |
| 8 | DA66-01002A | 4 | M0434 | LEVER-TRAY ICE | RT320,POM,NTR,3TWIST | 1 | SA |
| 9 | DA66-01003A | 4 | - | LEVER-TRAY ICE KNOB | 3050,TMF,PA66,NTR | 1 | SA |
| 10 | DA97-13670A | 3 | - | ASSY TRAY-ICE CUBE | 3050,3-TWIST,TP BLUE | 1 | SA |
| 11 | DA63-07333A | 4 | - | TRAY ICE-CUBE | RT38/35/32/29,3-TWIST,GPPS | 1 | SA |
| 12 | DA41-00519R | 2 | G0090 | ASSY LAMP-LED | 3ea,CEM-1,65*10,WHITE,SMAW | 1 | SA |
| 13 | DA63-07355A | 2 | A0756 | COVER-AIR FRE | RT380/350,PP,COOL WHITE | 1 | SA |
| 14 | DA97-14386A | 2 | M0303 | ASSY COVER EVAP-FRE | 3050-2,RT53/50/46/43 | 1 | SA |
| 15 | DA63-07705A | 3 | - | COVER EVAP-FRE | 3050-2,PP,HB,COOL WHITE,B | 1 | SNA |
| 16 | DA31-00287B | 3 | - | MOTOR BLDC FAN | ARES2120RA,1870±4%,12V,21 | 1 | SA |
| 17 | DA96-01038A | 2 | A0163 | ASSY EVAP-FRE | RT-H530/500,FIN TUBE,230V, | 1 | SA |
| 18 | DA32-00006D | 3 | A1018 | SENSOR TEMP | PX-41C,502AT,DKST1329GW,EXPO | 1 | SA |
| 19 | DA47-00301F | 3 | A1008 | THERMO FUSE-ASSY | AC250V,10A,109~110℃,S.O | 1 | SA |
| 20 | DA47-00460F | 3 | A0921 | HEATER METAL SHEATH | AC230V,3050 TMF, 330 | 1 | SA |
| 21 | DA96-01038A | 2 | A0163 | ASSY EVAP-FRE | RT-H530/500,FIN TUBE,230V, | 1 | SA |
| 22 | DA61-00603A | 3 | T0066 | FIXER-SENSOR | n-PJT,PP,-,-,- | 1 | SA |
| 23 | DA61-07410A | 3 | G0205 | FIXER-HEATER FRE | NW2,PP,WHITE,VO | 1 | SA |
| 24 | DA61-07411A | 3 | A0744 | FIXER-FUSE | NW2,PP,NATURAL,BJ730 | 1 | SA |
| 25 | DA61-09104B | 3 | - | PLATE EVAP-REAR | 3050,GI-SGCC,-,T0.3 | 1 | SA |
| 26 | DA67-30266K | 2 | A0270 | CAP-SCREW | A-TOP,PP,SC-02740R,-,-,Cool-wh | 3 | SA |
| 27 | DA67-03790A | 2 | - | SHELF-FRE | 3050-2,GPPS,TP BLUE,RT53/50 | 1 | SA |
| 28 | DA66-10104A | 4 | - | ROLLER-FRE | POM,-,-,D22,-,-, | 2 | SC |

SAMSUNG ELECTRONICS

11569467

Fridge compartment

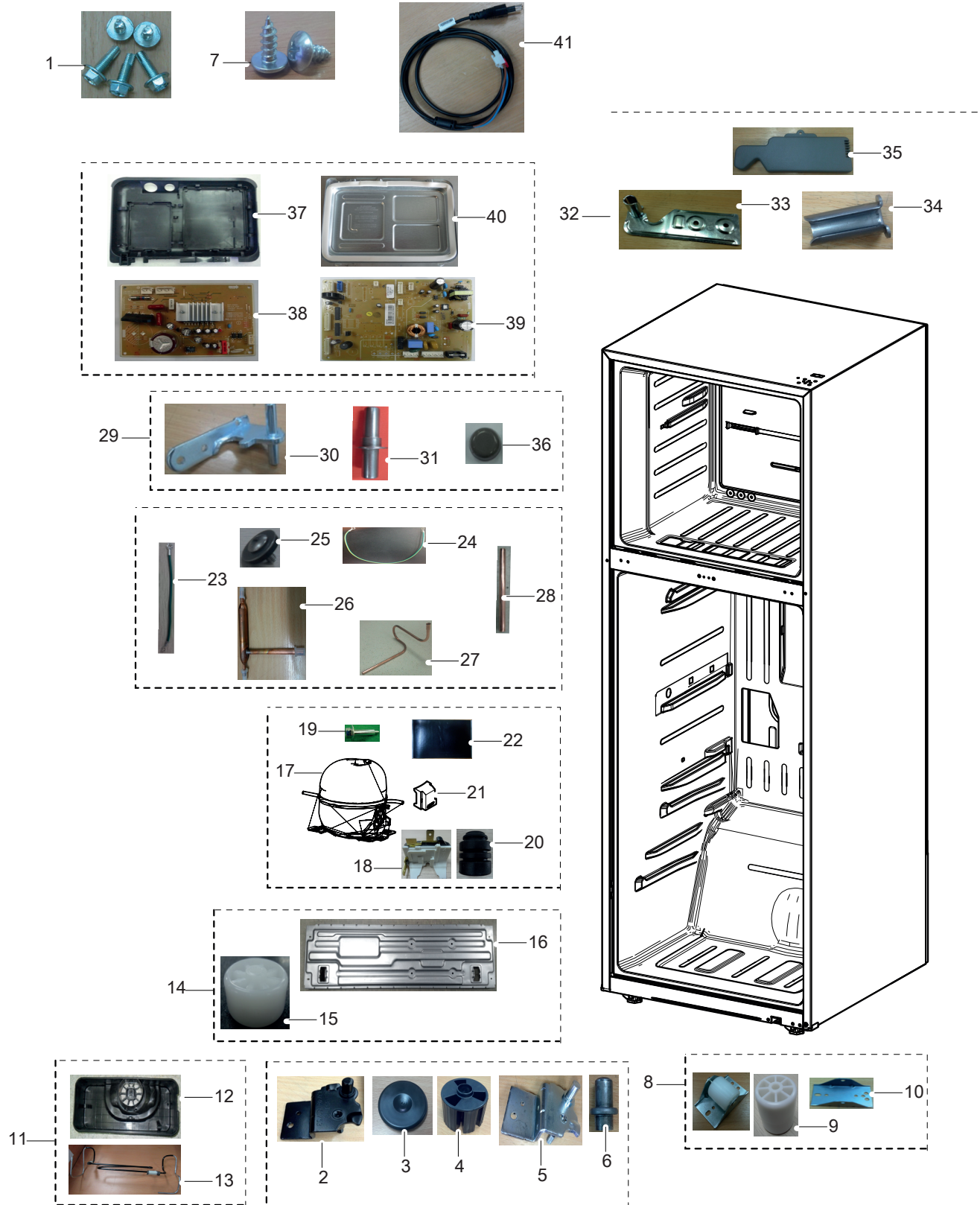


PART LIST OF FRIDGE : RT53H6630SL/EF

| No. | Code No. | Lvl. | Loc. | Description | Specification | Qty | SA/SNA |
|-----|-------------|------|-------|-----------------------|---------------------------------|-----|--------|
| 1 | DA63-07693A | 2 | - | TRAY CHILLED ROOM | RT53/50,GPPS,TP BLUE,R | 1 | SA |
| 2 | DA63-07691A | 2 | - | COVER CHILLED ROOM | RT53/50,GPPS,-,TP BLU | 1 | SA |
| 3 | DA97-14355A | 2 | - | ASSY SHELF REF GLASS | RT 53/50,TRIM SHELF | 2 | SA |
| 4 | DA67-03645W | 3 | - | GLASS-SHELF REF | GLASS | 2 | SNA |
| 5 | DA64-04280D | 3 | - | TRIM SHELF-REF FRONT | RT 50/53,HIPS,S834S | 2 | SNA |
| 6 | DA64-04634A | 3 | - | TRIM SHELF-REF REAR | RT 50/53,HIPS,S834S1 | 2 | SA |
| 7 | DA97-14343A | 2 | - | ASSY SHELF SLIDE | RT53/50 | 1 | SA |
| 8 | DA67-03645X | 3 | - | GLASS-SHELF REF SLIDE | T3.2,GLASS | 1 | SNA |
| 9 | DA67-03798A | 3 | - | SHELF SLIDE | RT53/50,HIPS,COOL WHITE,RT-H | 1 | SNA |
| 10 | DA41-00519B | 2 | G0090 | ASSY LAMP LED | 5ea,CEM-1,100*20,WHITE,SMA | 1 | SA |
| 11 | DA63-07368A | 2 | A0490 | COVER-LAMP | 3050,GPPS,T2.0,TRANSFANRENCY | 2 | SA |
| 12 | DA97-14334A | 2 | - | ASSY CASE VEG-UP | RT53/50 | 1 | SA |
| 13 | DA61-09577A | 3 | - | CASE VEG-UP | RT53/50,GPPS,TP BLUE,656D,RT | 1 | SNA |
| 14 | DA63-07695A | 3 | - | COVER VEG-FRONT UP | RT53/50,GPPS,HB,TP BL | 1 | SNA |
| 15 | DA97-14336A | 2 | M0300 | ASSY CASE VEG-LOW | RT53/50 | 1 | SA |
| 16 | DA61-09579A | 3 | - | CASE VEG-LOW | RT53/50,PP,COOL WHITE,-,BJ7 | 1 | SNA |
| 17 | DA63-07698A | 3 | - | COVER VEG-FRONT LOW | RT53/50,GPPS,HB,TP B | 1 | SNA |
| 18 | DA97-14341A | 2 | A0181 | ASSY COVER VEG | RT53/50 | 1 | SA |
| 19 | DA63-07700A | 3 | A0210 | COVER VEG | RT53/50,HIPS,-,COOL WHITE,ATEC | 1 | SNA |
| 20 | DA63-07341A | 2 | - | COVER-SHEET | 3050,HIPS,T2.0,HB,COOL WHITE | 1 | SA |
| 21 | DA67-03645Y | 3 | - | GLASS-SHELF REF LOW | GLASS | 1 | SNA |
| 22 | DA66-00885A | 2 | A0919 | ROLLER-VEG | TD,PP,NTR | 2 | SA |
| 23 | DA97-13606A | 2 | - | ASSY COVER-DEODORIZER | 3050PJT | 1 | SA |
| 24 | DA02-00216B | 3 | - | CATALYST-DEODORIZER | T10,W15,L30,activate | 1 | SA |
| 26 | DA63-07423A | 3 | - | COVER-DEODORIZER | 3050,PP,-,COOL WHITE,BJ | 1 | SNA |
| 27 | DA97-14387B | 2 | G0239 | ASSY COVER MULTI-REF | 3050-2,RT53/50/46/4 | 1 | SA |
| 28 | DA32-00006D | 3 | A1018 | SENSOR TEMP | PX-41C,502AT,DKST1329GW,EXPO | 1 | SA |
| 29 | DA62-04343A | 3 | - | INSULATION-REF | RT53/50/46/43,PS FOAM,WHI | 1 | SNA |
| 30 | DA63-07706B | 3 | - | COVER MULTI-REF | 3050-2,PP,HB,COOL WHITE, | 1 | SNA |
| 31 | DA67-00738A | 3 | M0356 | CAP-KNOB | MAX-PJT,PP,WHITE (SC-93437R),WE | 1 | SNA |

11569467

Cabinet compartment



PART LIST OF CABINET : RT53H6630SL/EF

| No. | Code No. | Lvl. | Loc. | Description | Specification | Qty | SA/SNA |
|-----|----------------|------|-------|-------------------------|------------------------------------|-----|--------|
| 1 | 6011-001546 | 2 | A0564 | BOLT-HEX | M5(P0.8),L16,ZPC(WHT),SWRCH18A, | 3 | SA |
| 2 | DA97-13857B | 2 | M0344 | ASSY HINGE-LOW | RT6000HW,RT43/46/50/53 | 1 | SA |
| 3 | DA61-07973B | 3 | A0863 | FOOT | POLARIS,PP,BLACK,PP_S | 1 | SA |
| 4 | DA61-10521A | 3 | A0577 | FOOT-FRONT | RT6000H,PP,BLACK,PP_SCRAP | 1 | SA |
| 5 | DA61-09307A | 3 | A0247 | HINGE-LOW | 3050,PO-SPHC,T4.0, TRIM-KIT | 1 | SNA |
| 6 | DA66-01052A | 4 | - | SHAFT HINGE-LOW | 3050-2,Trimkit,SWCH10A,N | 1 | SNA |
| 7 | 6002-000470 | 2 | G0412 | SCREW-TAPPING | TH,+,NO,1,M4,L10,ZPC(WHT), | 3 | SNA |
| 8 | DA97-02361A | 3 | - | ASSY-CASTER FRONT | TD-PJT,-,-,- | 2 | SA |
| 9 | DA61-07901A | 4 | M0145 | CASTER-FRONT | TD,PP,NTR | 2 | SA |
| 10 | DA61-07925A | 4 | - | REINF-CASTER | TD,HGI-SGHC,T1.6 | 2 | SNA |
| 11 | DA97-12658D | 2 | A0529 | ASSY TRAY DRAIN WATER | 3050_TMF,ADD PIPE | 1 | SA |
| 12 | DA63-06816A | 3 | - | TRAY-DRAIN WATER INV | Trinity2,PP,T2.0,HB | 1 | SNA |
| 13 | DA97-13647B | 3 | - | ASSY PIPE IMMERSING | 3050_TMF,Add seal,RT | 1 | SA |
| 14 | DA97-14356A | 2 | A0526 | ASSY CHASSIS COMP | 3050- II (RT-H530G),CASTE | 1 | SA |
| 15 | DA61-40126B | 3 | A0527 | CASTER-REAR | REF-ALL,PP,NATURAL | 2 | SNA |
| 16 | DA64-04656A | 3 | A0739 | CHASSIS COMP | 3050- II (RT-H530G),GI-SGCC,-, | 1 | SNA |
| 17 | MSV4A1AL1R/TT1 | 2 | - | COMPRESSOR | 115/220V | 1 | - |
| 18 | DA34-00004D | 3 | A0575 | RELAY PROTECTOR O/L | 4TM445PHBY-82, 125°C | 1 | SA |
| 19 | 6011-001546 | 2 | A0564 | BOLT-HEX | M5(P0.8),L16,ZPC(WHT),SWRCH18A, | 3 | SA |
| 20 | DA63-02617A | 3 | Z1112 | GROMMET COMP | USP05,EPDM,OD27.0,BLACK | 4 | SA |
| 21 | DA63-06122A | 3 | Z1032 | COVER RELAY | MSV,MPPO,T2.0,5V-A,BLACK,M-H | 1 | SA |
| 22 | DA62-00960A | 2 | - | SEAL CUTT-RUBBER | RUBBER,BLACK,T3,W40,L70 | 1 | SA |
| 23 | DA39-00429D | 2 | A0562 | ASSY WIRE HARNESS-EARTH | ALL,FREE VOLT,UL | 1 | SA |
| 24 | DA39-00429D | 2 | A0562 | ASSY WIRE HARNESS-EARTH | ALL,FREE VOLT,UL | 1 | SA |
| 25 | DA60-00018A | 2 | - | SCREW MACHINE | TH,+,PASS,STS304 | 1 | SA |
| 26 | DA62-04309C | 2 | A0669 | DRYER | C1220,114,SINGLE MOUTH,Outlet ID2. | 1 | SA |
| 27 | DA62-04366A | 2 | - | PIPE SUCTION-CONNECT | RT-H530G,CU,-,C1220 | 1 | SA |
| 28 | DA73-00199B | 2 | Z1004 | PIPE-PIPE CONNECT | -,C1220T,-,OD6.35,L95, | 1 | SA |
| 29 | DA97-14404A | 2 | - | ASSY HINGE-MIDDLE | RT-H530G,530/500/460/4 | 1 | SA |
| 30 | DA61-09576A | 3 | - | HINGE-MIDDLE | RT53,50,PO-SPHC,T4.5,ZPC | 1 | SNA |
| 31 | DA66-01106A | 3 | - | SHAFT-MIDDLE | RT-H530G,SWCH10A,- | 1 | SNA |
| 32 | DA97-13610A | 2 | A0705 | ASSY HINGE UPP | 3050PJ,T2.0,380/350 | 1 | SA |
| 33 | DA61-08986A | 3 | A0240 | HINGE-UPP | 3050PJ,PO-SPHC,T2.0,350/380 | 1 | SNA |
| 34 | DA66-00349A | 3 | A0518 | SHAFT-HINGE | USP-PJT,SPC | 1 | SNA |
| 35 | DA63-07711A | 2 | A0237 | COVER HINGE-UP | RT53,50,46,43,PP,HB,BJ750 | 1 | SA |
| 36 | DA67-30266K | 2 | - | CAP-SCREW | A-TOP,PP,SC-02740R,-,-,Cool-wh | 3 | SA |
| 37 | DA61-08917A | 3 | - | CASE-PCB PANEL | 320,PP,BLACK,-,COPO,3050 | 1 | SNA |
| 38 | DA92-00459A | 1 | M0309 | ASSY PCB INVERTER | INVERTER,3050,148*98.5 | 1 | SA |
| 39 | DA92-00601E | 1 | A0952 | ASSY PCB MAIN | DISPLAY,REACTOR,RT6000HW,1 | 1 | SA |
| 40 | DA97-13545C | 2 | - | ASSY COVER PCB-PANEL | 320, 350, 380,3050 | 1 | SA |
| 41 | 3903-000793 | 2 | A0273 | CBF-POWER CORD | AT,E.U,EU3F,3C,250V,16A,B | 1 | SA |