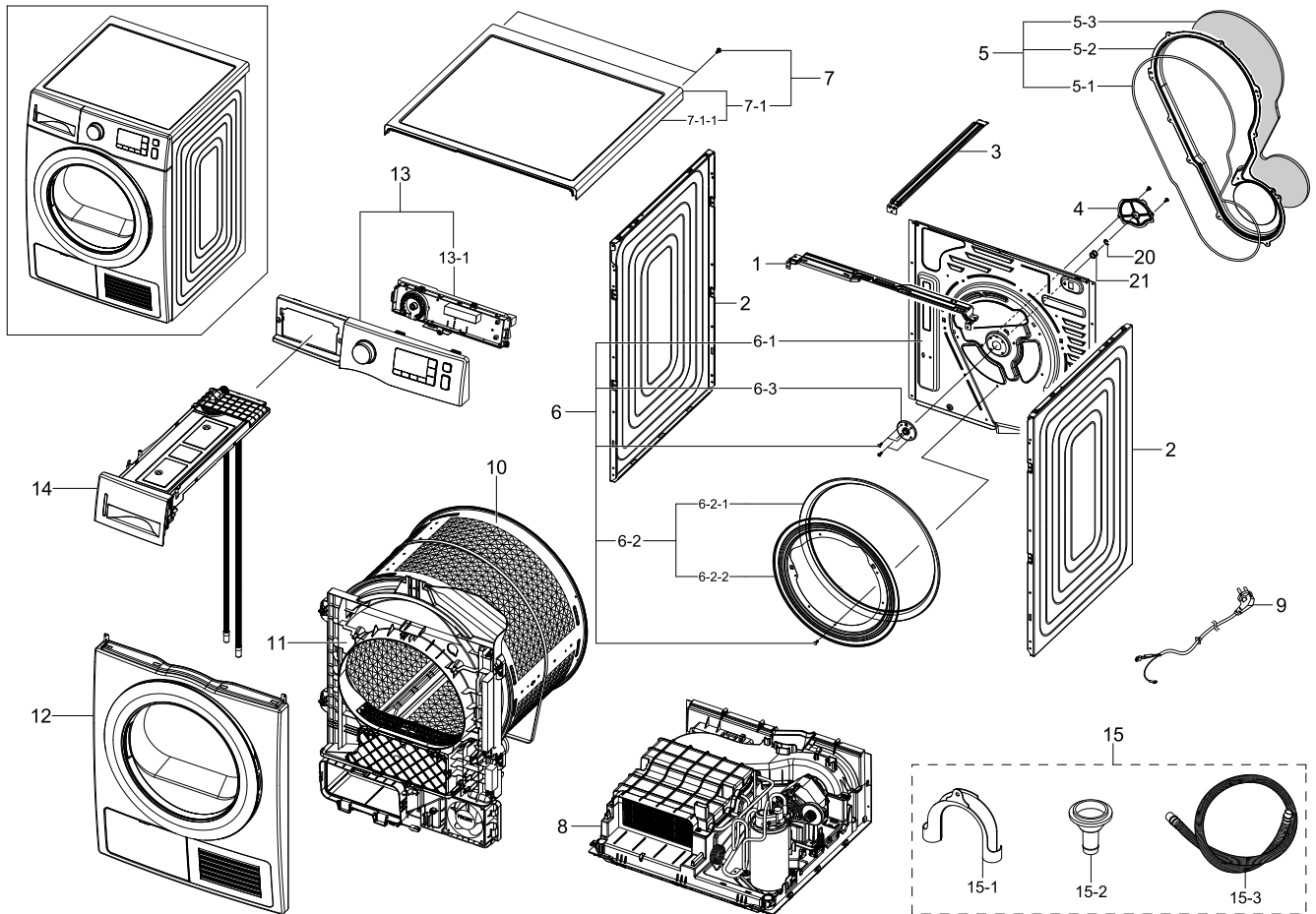


# 1. Main

## Exploded View



## Parts List

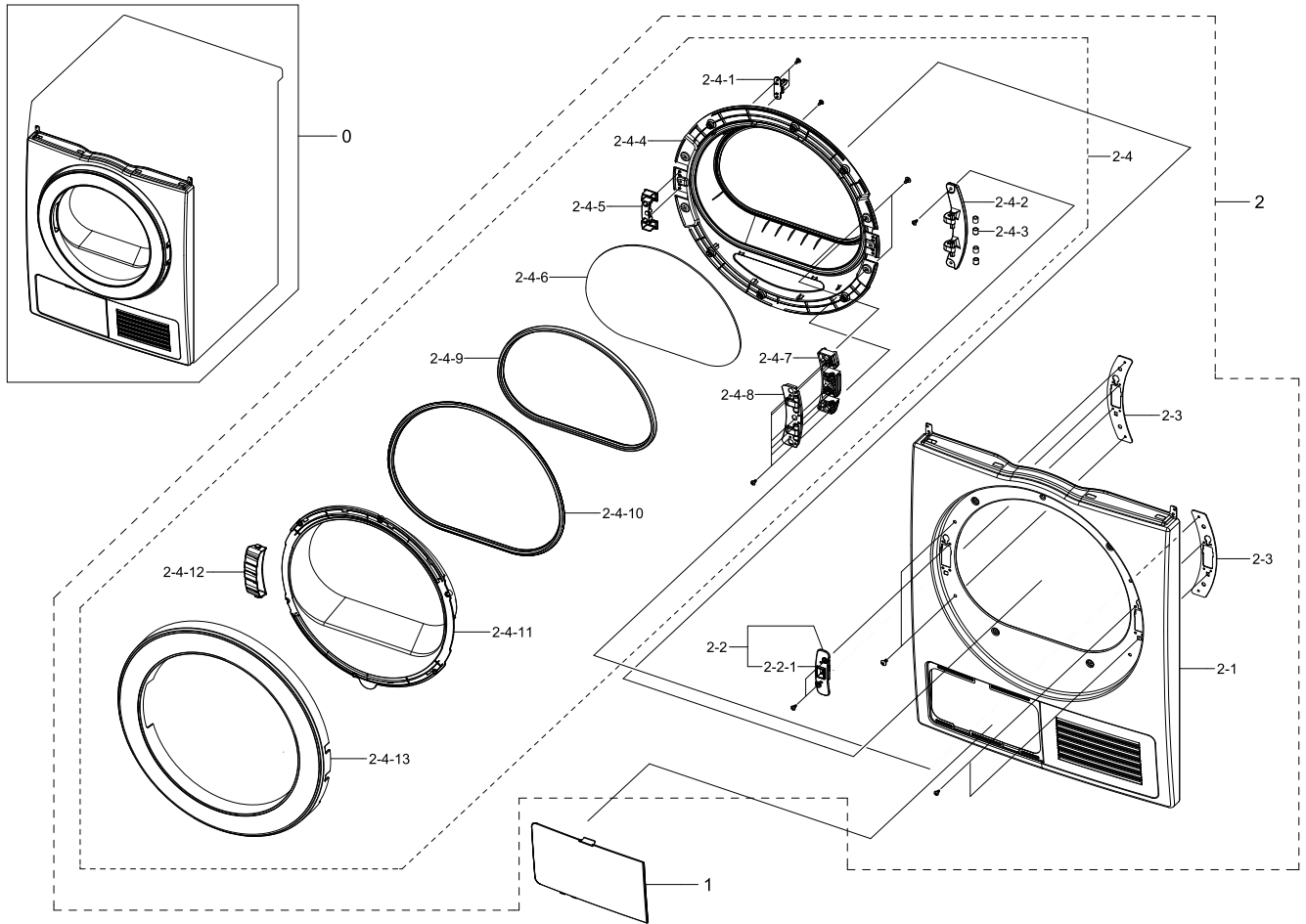
| No. | Lvl. | Loc.   | Material Code | Description & Specification                  | SNA | Qty. |
|-----|------|--------|---------------|--|-----|------|
| 1   | 2    | WF0008 | DC97-17883A   | ASSY FRAME PLATE(U);<br>DV-F500E,DV90F5E6HGW | SNA | 1    |
| 2   | 2    |        | DC61-03638A   | FRAME-SIDE; DV90F5E6HGW,EGI-SECC,-,DA<br>WHI | SA  | 2    |
| 3   | 2    |        | DC61-03639A   | GUIDE WIRE; DV90F5E6HGW,GI-SGCC,T1.2,-,-     | SA  | 1    |
| 4   | 2    | WS0141 | DC63-01263A   | COVER BEARING;<br>SDC18809,EGI-SECC,T0.8,W10 | SA  | 1    |
| 5   | 2    | WY0097 | DC93-00382A   | ASSY COVER DUCT;<br>DV-F500E,DV90F5E6HGW,PP+ | SA  | 1    |
| 5-1 | 3    |        | DC62-00377C   | SEAL DUCT;<br>DV90F5E6HGW,EPDM,BLACK,-,L1840 | SA  | 1    |
| 5-2 | 3    |        | DC63-01605A   | COVER DUCT FAN;<br>DV90F5E6HGW,PP,-,-,DARK H | SNA | 1    |
| 5-3 | 3    |        | DC63-01620A   | ABSORBER SPONGE;<br>DV90F5E6HGW,PE-FOAM,T10, | SNA | 1    |

Exploded Views and Parts List

| No.   | Lvl. | Loc.   | Material Code | Description & Specification                  | SNA | Qty. |
|-------|------|--------|---------------|--|-----|------|
| 6     | 2    |        | DC97-17452A   | ASSY FRAME-REAR;<br>DV-F500E,DV90F5E6HGW,-   | SNA | 1    |
| 6-1   | 3    |        | DC61-03637A   | FRAME-REAR;<br>DV90F5E6HGW,GI-SGCC,-,-,T0.7  | SNA | 1    |
| 6-2   | 3    | WJ0091 | DC93-00072A   | ASSY GASKET FELT;<br>GE24-DRYER,DCVH480EK,-, | SA  | 1    |
| 6-2-1 | 4    | WJ0110 | DC93-00093A   | ASSY GASKET FELT SUB;<br>GE24-DRYER,DCVH480E | SA  | 1    |
| 6-2-2 | 4    | WJ0093 | DC61-02263A   | BRACKET GASKET FELT;<br>DCVH480EK0WW,STAINLE | SA  | 1    |
| 6-3   | 3    | WS0009 | DC97-16288A   | ASSY HOUSING BEARING;<br>D100-PJT,SDC18809,8 | SA  | 1    |
| 7     | 1    | WF0003 | DC90-13380A   | ASSY COVER TOP; DV-F500E 9KG                 | SNA | 1    |
| 7-1   | 2    | WF0003 | DC97-17446A   | ASSY COVER TOP;<br>DV-F500E,DV90F5E6HGW,DA-W | SA  | 1    |
| 7-1-1 | 3    |        | DC63-01606A   | COVER TOP; DV90F5E6HGW,ABS,T3.5,-,DA<br>WHIT | SA  | 1    |
| 8     | 1    | WB0001 | DC90-13379A   | ASSY BASE; DV-F500E 9KG                      | SNA | 1    |
| 9     | 2    | WE0016 | DC96-00146A   | ASSY POWER CORD;<br>VDE,UCP2,250V16A,H05VV-F | SC  | 1    |
| 10    | 1    | WG0004 | DC90-13381A   | ASSY DRUM; DV-F500E 9KG                      | SNA | 1    |
| 11    | 2    |        | DC97-17459B   | ASSY DRUM FRONT;<br>DV-F500E,DV70F5E0HGW     | SA  | 1    |
| 12    | 1    | WF0009 | DC90-13717A   | ASSY FRONT; DV-F500E(7kg)                    | SNA | 1    |
| 13    | 1    | WC0016 | DC90-16910A   | ASSY PANEL CONTROL; DV70F5E0HGW/EF           | SNA | 1    |
| 13-1  | 2    |        | DC92-01482A   | ASSY KIT; PBA KIT,DV-F500E,HEAT PUMP<br>DRYE | SA  | 1    |
| 14    | 1    | WR0005 | DC90-13383A   | ASSY DRAWER; DV-F500E 9KG                    | SNA | 1    |
| 15    | 2    | WA0002 | DC98-01730A   | ASSY ACCESSORY; DV-F500E,DV90F5E6HGW         | SNA | 1    |
| 15-1  | 3    | WH5379 | DC62-10278A   | HOSE HANGER; PUMP MODEL,PP,BLACK             | SA  | 1    |
| 15-2  | 3    |        | DC61-02479A   | GUIDE HOSE; SDC18809,PP,T1.5,L34.5,NTR,D1    | SA  | 1    |
| 15-3  | 3    | WH0023 | DC97-15757C   | ASSY HOSE DRAIN;<br>D100,SDC18809,L1998,ID9. | SA  | 1    |
| 20    | 2    | WX0623 | 6044-001784   | RING-C; ID11.1,STW-12,T1.0,BLK,STC5          | SA  | 1    |
| 21    | 2    | WJ0083 | 6031-002038   | WASHER-PLAIN; NYLON,ID12,OD17,T1.0,NTR       | SA  | 2    |

## 2. Assy Front

### Exploded View



### Parts List

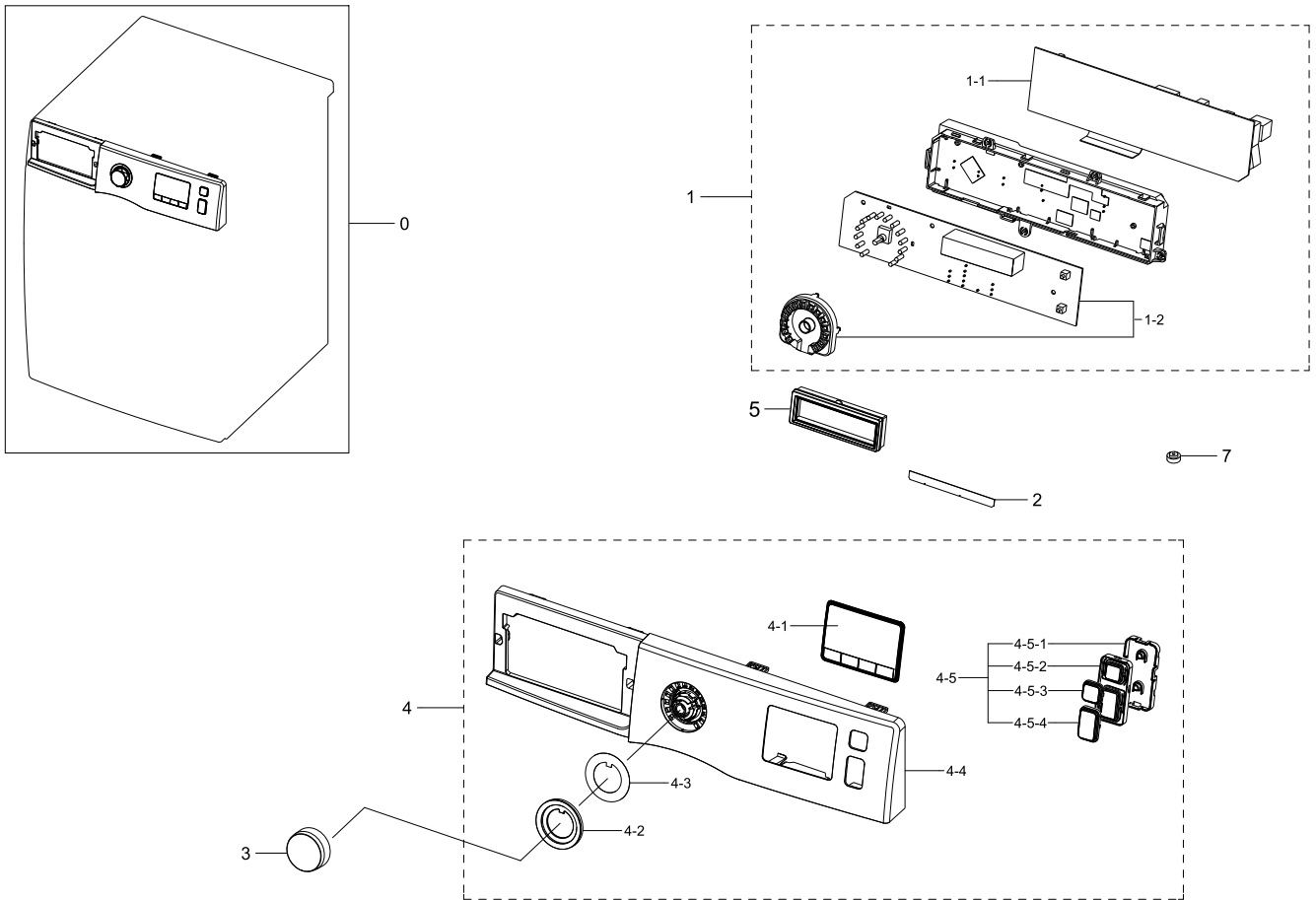
| No.   | Lvl. | Loc.   | Material Code | Description & Specification                  | SNA | Qty. |
|-------|------|--------|---------------|--|-----|------|
| 0     | 1    | WF0009 | DC90-13717A   | ASSY FRONT; DV-F500E(7kg)                    | SNA | 1    |
| 1     | 2    |        | DC63-01603A   | COVER CONDENSER;<br>DV-F500E,ABS,T2.5,-,DA W | SA  | 1    |
| 2     | 2    | WF0005 | DC97-17440B   | ASSY FRAME FRONT;<br>DV-F500E,DV70F5E0HGW,WH | SNA | 1    |
| 2-1   | 3    |        | DC61-03640A   | FRAME FRONT; DV-F500E,EGI-SECD,-,DA<br>WHITE | SA  | 1    |
| 2-2   | 3    | WD0011 | DC97-15505B   | ASSY HOLDER LEVER; D100,SDC18809,DARK<br>HOL | SA  | 1    |
| 2-2-1 | 4    | WD0106 | DC61-02253B   | HOLDER LEVER; D100,POM,DARK HOLDER<br>GRAY   | SA  | 1    |
| 2-3   | 3    | WP0101 | DC61-02283A   | BRACKET HINGE;<br>DCVH480EK0WW,HGI,T2.0,W35, | SA  | 2    |
| 2-4   | 3    | WD0003 | DC97-17448B   | ASSY DOOR; DV-F500E,DV70F5E0HGW              | SA  | 1    |

Exploded Views and Parts List

| No.    | Lvl. | Loc.   | Material Code | Description & Specification                  | SNA | Qty. |
|--------|------|--------|---------------|--|-----|------|
| 2-4-1  | 4    | WD0114 | DC66-00643A   | LEVER DOOR; SDC18809,ZNDC,W52,L31,NI<br>PLAN | SNA | 1    |
| 2-4-2  | 4    | WD0096 | DC61-02252A   | HINGE DOOR;<br>GE24-DRYER,ALDC,T3.0,W47.1,L2 | SA  | 1    |
| 2-4-3  | 4    | WD0090 | DC61-00891A   | GUIDE HINGE;<br>HAUZEN(DOM),POM,-,-,WHT,HI   | SA  | 4    |
| 2-4-4  | 4    | WD0104 | DC61-03648A   | HOLDER GLASS;<br>DV90D5E5HGW,PP,T3.0,DARK HO | SA  | 1    |
| 2-4-5  | 4    | WD0091 | DC61-02455A   | GUIDE HOLDER GLASS;<br>SDC18809,PP,W85.5,L33 | SA  | 1    |
| 2-4-6  | 4    |        | DC64-02962A   | DOOR GLASS;<br>DV90F5E6HGW,GLASS,T3.2,-,CLEA | SA  | 1    |
| 2-4-7  | 4    | WD0145 | DC61-02456A   | HOLDER HINGE;<br>SDC18809,PP,W140,L35,GRY,D1 | SA  | 1    |
| 2-4-8  | 4    | WD0134 | DC61-02462A   | SUPPORT HINGE;<br>SDC18809,GI-SGCC,T1.4,W143 | SA  | 1    |
| 2-4-9  | 4    |        | DC62-00270B   | SEAL DOOR;<br>DV90F5E6HGW,TPE,-,-,XR-1045,GR | SA  | 1    |
| 2-4-10 | 4    |        | DC62-00271B   | SEAL AIR;<br>DV90F5E6HGW,TPE,-,-,XR-1045,GRA | SA  | 1    |
| 2-4-11 | 4    |        | DC63-01616A   | COVER DOOR; DV90D5E5HGW,HIPS,T2.5,-,DA<br>WH | SA  | 1    |
| 2-4-12 | 4    | WD0093 | DC64-01998B   | HANDLE DOOR; SDC16809,HIPS,-,-,DA<br>WHITE,W | SA  | 1    |
| 2-4-13 | 4    | WD0037 | DC63-01086A   | COVER DOOR; SDC16809,ABS,-,HB,DA<br>WHITE,HG | SNA | 1    |

### 3. Assy Panel Control

#### Exploded View



#### Parts List

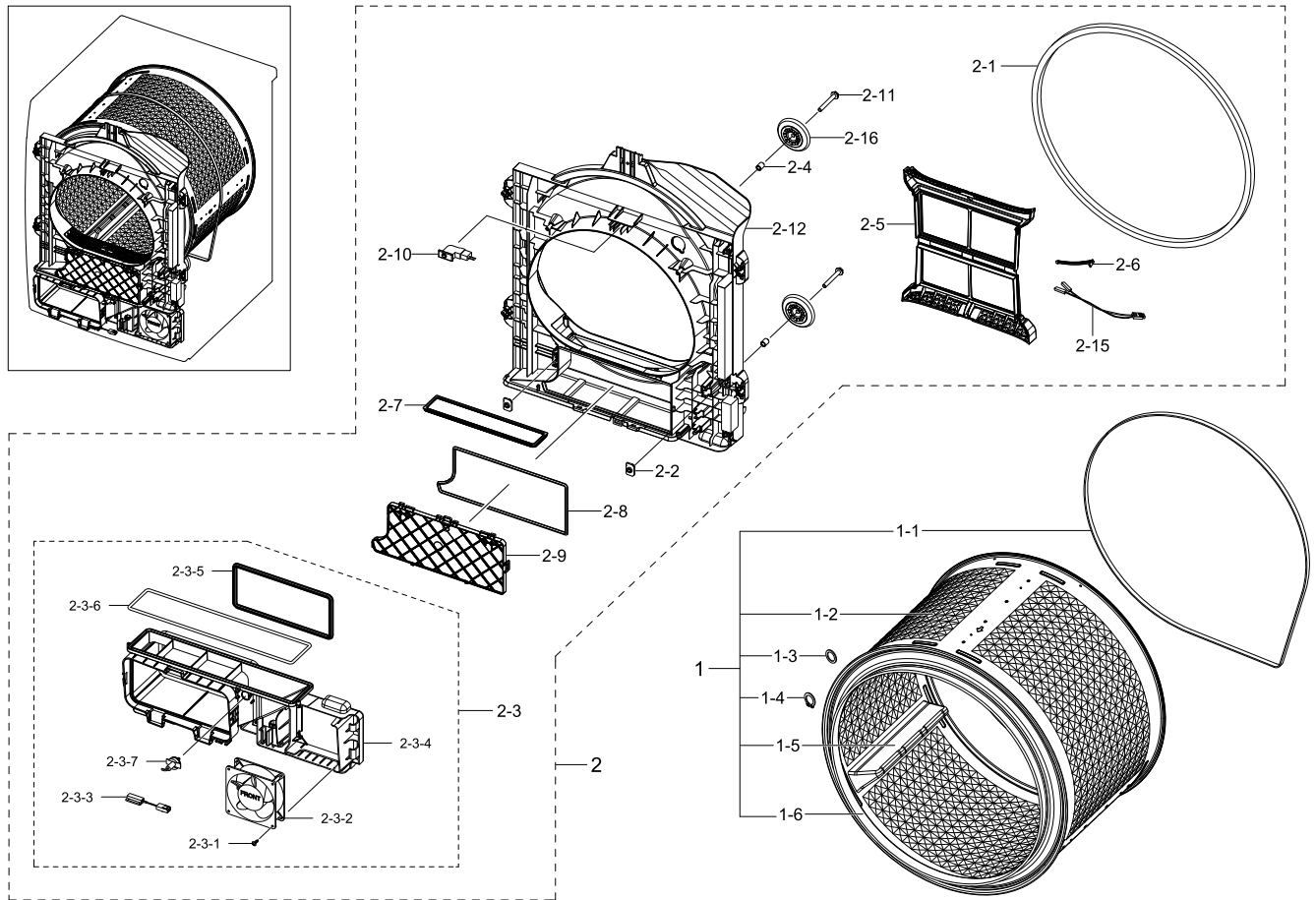
| No. | Lvl. | Loc.   | Material Code | Description & Specification               | SNA | Qty. |
|-----|------|--------|---------------|---|-----|------|
| 0   | 1    | WC0016 | DC90-16910A   | ASSY PANEL CONTROL; DV70F5E0HGW/EF        | SNA | 1    |
| 1   | 2    |        | DC92-01482A   | ASSY KIT; PBA KIT,DV-F500E,HEAT PUMP DRYE | SA  | 1    |
| 1-1 | 3    | WZ0010 | DC92-01484A   | ASSY PCB MAIN; MAIN,DV-F500E,Y,230V/50HZ, | SA  | 1    |
| 1-2 | 3    | WZ0025 | DC92-01487A   | ASSY PCB SUB; SUB BETTER 7kg,DV-F500E,N,H | SA  | 1    |
| 2   | 2    |        | DC93-00352A   | ASSY SENSOR; F400 BETTER,TOUCH SENSOR,4-B | SA  | 1    |
| 3   | 2    | WC0009 | DC97-17318B   | ASSY KNOB ENCODER; WF80F50FU4W/EF         | SNA | 1    |
| 4   | 2    | WC0016 | DC97-17790G   | ASSY PANEL CONTROL; DV70F5E0HGW/EF,FRENCH | SA  | 1    |
| 4-1 | 3    |        | DC64-02862V   | WINDOW PANEL; DV70F5E0HGW/EF,ABS+PMMA,-,T | SNA | 1    |
| 4-2 | 3    | WC0135 | DC64-02856A   | WINDOW ENCODER; F500E,ABS+PMMA,-,TF-0930, | SNA | 1    |

Exploded Views and Parts List

| No.   | Lvl. | Loc.   | Material Code | Description & Specification                  | SNA | Qty. |
|-------|------|--------|---------------|--|-----|------|
| 4-3   | 3    | WC0095 | DC64-02889B   | INLAY ENCODER;<br>WF80F4E1W2W,PET,T0.188,-   | SNA | 1    |
| 4-4   | 3    |        | DC64-02956A   | PANEL CONTROL;<br>DV90D5E5HGW,ABS,-,HG-0760G | SNA | 1    |
| 4-5   | 3    | WC0001 | DC97-17392A   | ASSY BUTTON; WF80F50FU4W/EF                  | SA  | 1    |
| 4-5-1 | 4    |        | DC63-01543A   | COVER-BUTTON(L); F500E,ABS,T2.0,-,DA<br>WHIT | SNA | 1    |
| 4-5-2 | 4    |        | DC64-02920A   | BUTTON PUSH-POWER; F500E,ABS,-,DA<br>WHITE,W | SNA | 1    |
| 4-5-3 | 4    |        | DC64-02921A   | DECORATION BUTTON-POWER;<br>F500E,PMMA,-,-,C | SNA | 1    |
| 4-5-4 | 4    |        | DC64-02922A   | DECORATION BUTTON-START;<br>F500E,PMMA,-,-,C | SNA | 1    |
| 5     | 2    |        | DC62-00403A   | SEAL RUBBER; EPDM,BLACK,-,BETTER             | SA  | 1    |
| 7     | 2    |        | DC62-00404A   | SEAL RUBBER;<br>DV90F5E6HGW,EPDM,BLACK,-,DV- | SA  | 1    |

# 4. Assy Drum

## Exploded View



## Parts List

| No. | Lvl. | Loc.   | Material Code | Description & Specification                  | SNA | Qty. |
|-----|------|--------|---------------|--|-----|------|
| 1   | 1    | WG0004 | DC90-13381A   | ASSY DRUM; DV-F500E 9KG                      | SNA | 1    |
| 1-1 | 2    | WS0060 | 6602-002024   | BELT-TIMING GEAR;<br>7PH1970,RUBBER,T2.7,L19 | SA  | 1    |
| 1-2 | 2    | WG0007 | DC97-17465A   | ASSY DRUM WRAPPER;<br>DV-F500E,DV90F5E6HGW   | SA  | 1    |
| 1-3 | 2    | WJ0083 | 6031-002038   | WASHER-PLAIN; NYLON,ID12,OD17,T1.0,NTR       | SA  | 2    |
| 1-4 | 2    | WX0623 | 6044-001784   | RING-C; ID11.1,STW-12,T1.0,BLK,STC5          | SA  | 1    |
| 1-5 | 3    | WG0055 | DC66-00541A   | DRUM LIFTER;<br>GE24-DRYER,PP,T3.0,FC2210,GR | SA  | 3    |
| 1-6 | 3    |        | DC66-00793A   | DRUM FRONT;<br>DV90F5E6HGW,STAINLESS-ST5430, | SNA | 1    |
| 2   | 2    |        | DC97-17459B   | ASSY DRUM FRONT;<br>DV-F500E,DV70F5E0HGW     | SA  | 1    |
| 2-1 | 3    | WI0028 | DC93-00125B   | ASSY GASKET PAD;<br>DV-F500E,DV90F5E6HGW,L16 | SNA | 1    |

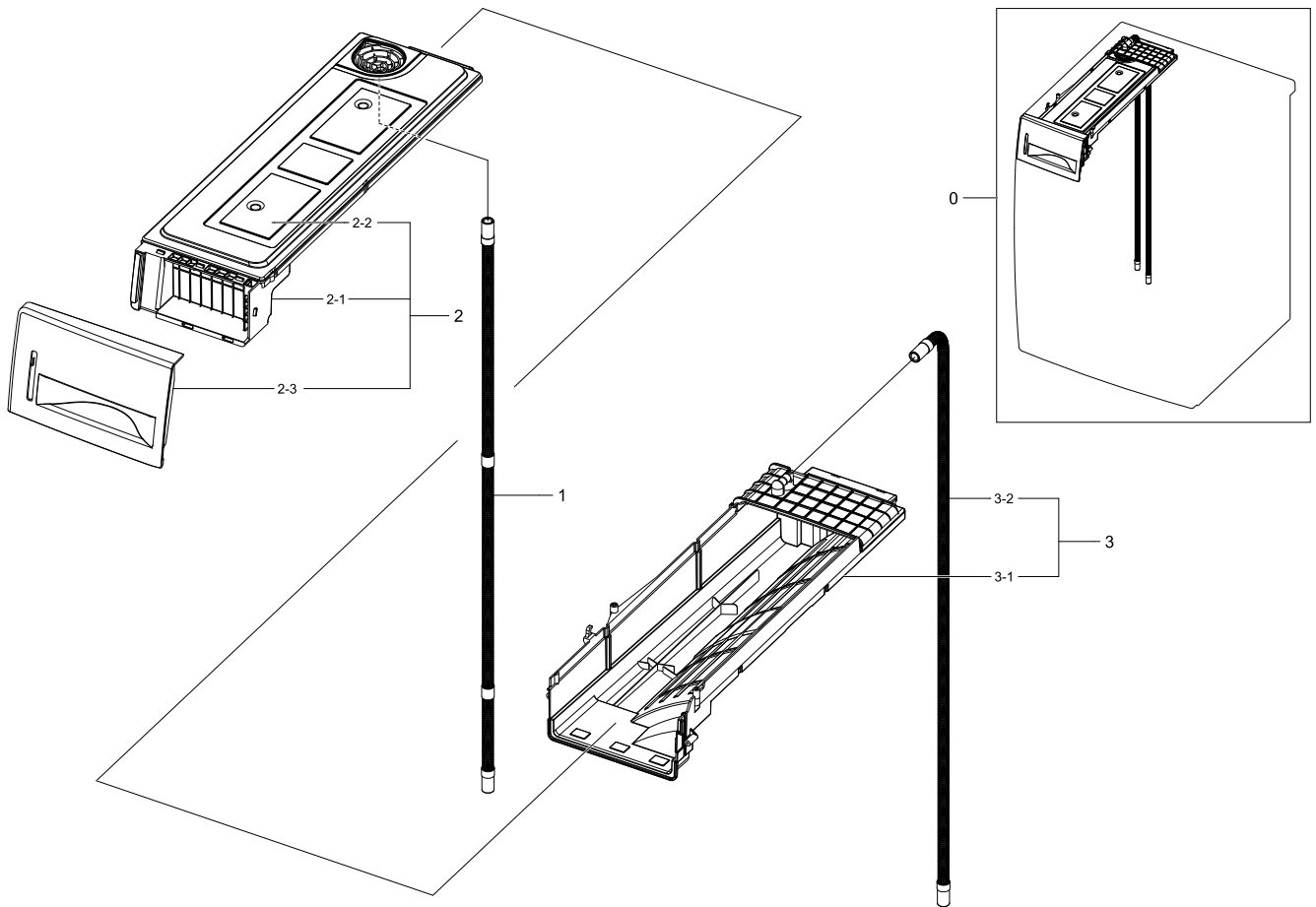
## Exploded Views and Parts List

| No.   | Lvl. | Loc.   | Material Code | Description & Specification                  | SNA | Qty. |
|-------|------|--------|---------------|--|-----|------|
| 2-2   | 3    | WP0122 | DC61-00201A   | BRACKET NUT;<br>P1291,SBHG-R,T3,NO-PAINT/MOT | SNA | 2    |
| 2-3   | 3    | WY0012 | DC93-00396A   | ASSY DUCT-FRONT;<br>DV-F500E,DV90F5E6HGW,PP( | SA  | 1    |
| 2-3-1 | 4    | WX0622 | 6002-001306   | SCREW-TAPPING;<br>TH,+,1,M4,L14,ZPC(WHT),SWR | SA  | 1    |
| 2-3-2 | 4    | WS0093 | DC31-00177A   | MOTOR FAN; F1238S12B,0.29A,3.5W,2000,DC 1    | SA  | 1    |
| 2-3-3 | 4    | WE0134 | DC34-00001G   | SWITCH REED; DC5V,1.5A,Sensor :<br>RHODIUM(M | SA  | 1    |
| 2-3-4 | 4    |        | DC61-03646A   | GUIDE AIR FLOW; PP,T2.5,HB,FC2305,DARK<br>HO | SA  | 1    |
| 2-3-5 | 4    |        | DC62-00280B   | SEAL CONDENSER; DV-F500E,TPE,KT<br>GRAY,-,L6 | SA  | 1    |
| 2-3-6 | 4    |        | DC62-00377B   | SEAL DUCT;<br>DV90F5E6HGW,EPDM,BLACK,-,L930  | SA  | 1    |
| 2-3-7 | 4    | WE5048 | DC90-10128G   | ASSY THERMISTOR; SEW-745DW,L120,-,-          | SA  | 1    |
| 2-4   | 3    | WS0063 | DC61-02485A   | BUSH BEARING;<br>SDC18809,SWRCH10A,ID8,OD12, | SA  | 2    |
| 2-5   | 3    |        | DC61-03634A   | CASE FILTER; DV90F5E6HGW,PP,T2.5,DARK<br>HOL | SA  | 1    |
| 2-6   | 3    |        | DC61-03635A   | PLATE SENSOR;<br>DV90F5E6HGW,STAINLESS-STS43 | SA  | 2    |
| 2-7   | 3    |        | DC62-00375A   | SEAL PACKING; DV90F5E6HGW,EPDM,DARK<br>HOLDE | SA  | 1    |
| 2-8   | 3    |        | DC62-00377A   | SEAL DUCT; DV90F5E6HGW,EPDM,BLACK,-          | SA  | 1    |
| 2-9   | 3    |        | DC63-01604A   | COVER DUCT-F;<br>DV90F5E6HGW,PP,T2.5,-,DARK  | SNA | 1    |
| 2-10  | 3    | WE0068 | DC64-00828D   | DOOR-S/W; PDS020-02 / SPE110F-1D,PA,T13.2    | SA  | 1    |
| 2-11  | 3    | WF0126 | DC66-00572A   | SHAFT ROLLER;<br>SDC18809,SWRCH10A,L61,OD8,Z | SA  | 2    |
| 2-12  | 3    |        | DC66-00792B   | DRUM FRONT-R;<br>DV70F5E0HGW,PP,T2.5,-,FC230 | SA  | 1    |
| 2-15  | 3    | WW5193 | DC96-00766A   | ASSY WIRE HARNESS; -                         | SA  | 1    |
| 2-16  | 3    | WS0021 | DC97-15768A   | ASSY ROLLER; D100-PJT,SDC18809               | SA  | 2    |



## 5. Assy Drawer&Housing Drawer

### Exploded View



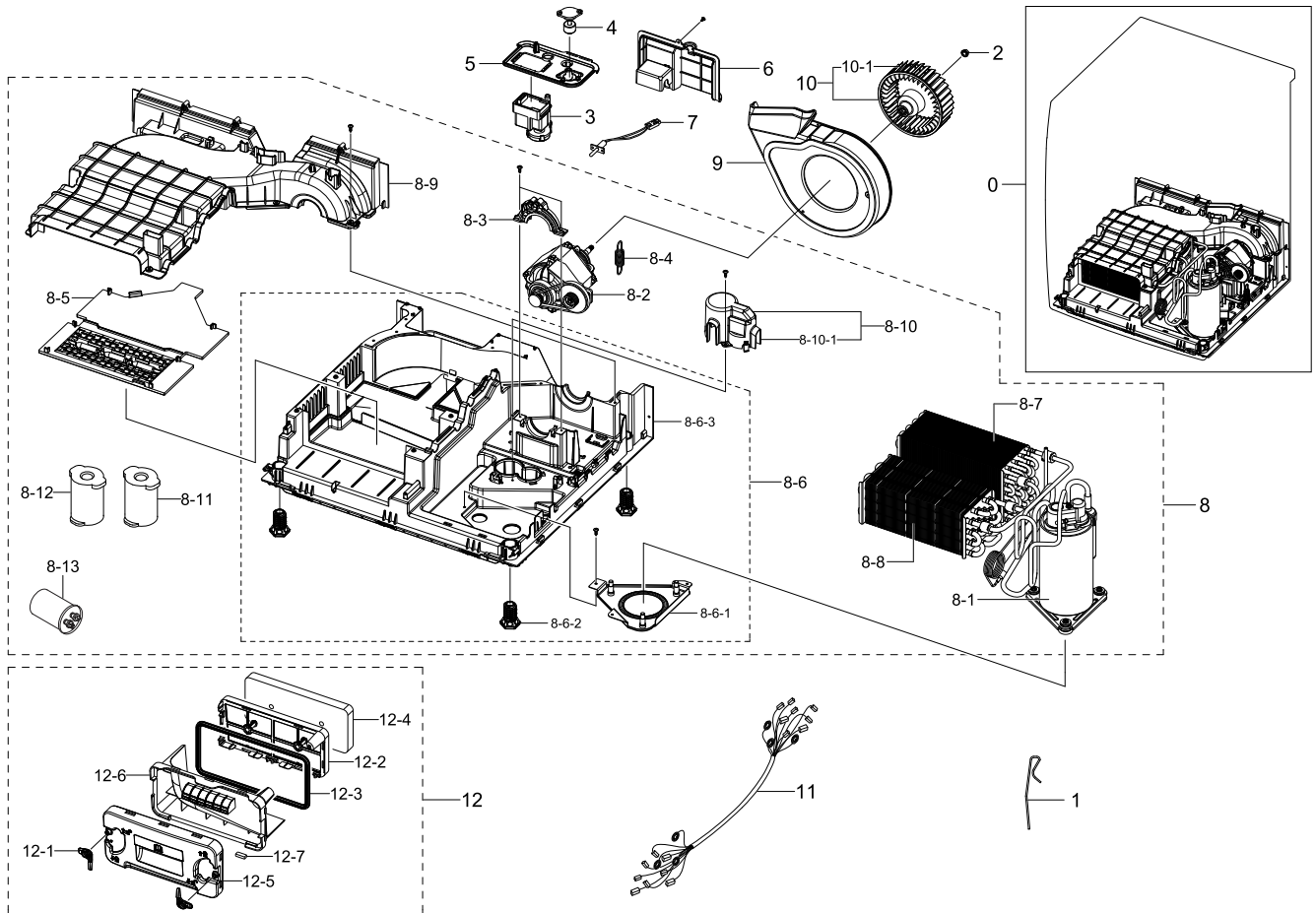
### Parts List

| No. | Lvl. | Loc.   | Material Code | Description & Specification                  | SNA | Qty. |
|-----|------|--------|---------------|--|-----|------|
| 0   | 1    | WR0005 | DC90-13383A   | ASSY DRAWER; DV-F500E 9KG                    | SNA | 1    |
| 1   | 2    | WH0023 | DC97-15757F   | ASSY HOSE DRAIN;<br>DV-F500E,DV90D5E5HGW,GRA | SA  | 1    |
| 2   | 2    | WR0005 | DC97-17450A   | ASSY DRAWER; DV-F500E,DV90F5E6HGW            | SA  | 1    |
| 2-1 | 3    |        | DC61-03644A   | BODY TANK WATER;<br>DV90D5E5HGW,PP,NATURAL   | SNA | 1    |
| 2-2 | 3    |        | DC61-03645A   | BODY TANK WATER-UP;<br>DV90D5E5HGW,PP,NATURA | SNA | 1    |
| 2-3 | 3    | WC0120 | DC64-02950A   | PANEL DRAWER;<br>DV90D5E5HGW,ABS,-,HG-0760GP | SA  | 1    |
| 3   | 2    | WR0008 | DC97-17451A   | ASSY HOUSING DRAWER;<br>DV-F500E,DV90F5E6HGW | SNA | 1    |
| 3-1 | 3    |        | DC61-03647A   | HOUSING DRAWER;<br>DV90D5E5HGW,PP,T2.5,NATUR | SA  | 1    |
| 3-2 | 3    | WH0023 | DC97-15757E   | ASSY HOSE DRAIN;<br>DV-F500E,DV90D5E5HGW,GRA | SA  | 1    |



## 6. Assy Base

### Exploded View



### Parts List

| No. | Lvl. | Loc.   | Material Code | Description & Specification                  | SNA | Qty. |
|-----|------|--------|---------------|--|-----|------|
| 0   | 1    | WB0001 | DC90-13379A   | ASSY BASE; DV-F500E 9KG                      | SNA | 1    |
| 1   | 2    |        | DC61-03700A   | SPRING ETC;<br>DV90F5E6HGW,STAINLESS-STS301, | SNA | 1    |
| 2   | 2    | WX0618 | 6021-001321   | NUT-INCH; RIGHT<br>TURN,3/8"-24,ZPC(BLK),SWC | SA  | 1    |
| 3   | 2    | WU5017 | DC31-00105A   | PUMP-DRAIN;<br>B13-6AA01120,220V-240V,50Hz,4 | SA  | 1    |
| 4   | 2    | WE0176 | DC34-00010A   | SWITCH FLOAT; 500.5mm,1.5                    | SA  | 1    |
| 5   | 2    |        | DC61-03643A   | HOLDER PUMP MOTOR;<br>DV-F500E,PP,T2.5,NATUR | SA  | 1    |
| 6   | 2    |        | DC63-01609A   | COVER PUMP;<br>DV-F500E,PP,T2.5,-,NATURAL,FH | SA  | 1    |
| 7   | 2    | WE5048 | DC90-10128G   | ASSY THERMISTOR; SEW-745DW,L120,-,-          | SA  | 1    |
| 8   | 2    |        | DC90-13394A   | ASSY CIRCULATION SYSTEM; DV-F500E            | SA  | 1    |

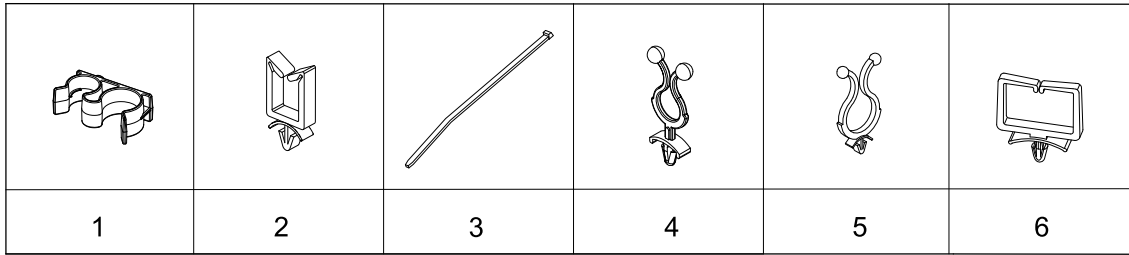
Exploded Views and Parts List

| No.    | Lvl. | Loc.   | Material Code  | Description & Specification                    | SNA | Qty. |
|--------|------|--------|----------------|--|-----|------|
| 8-1    | 3    |        | UX9B042JHCJASG | RCP,39B SINGLE,J,R134A; RCP,39B SINGLE,J,R134A |     | 1    |
| 8-2    | 3    |        | DC31-00106C    | MOTOR AC DRIVE;<br>DV-F500E,Y6S258D203,2Pole   | SA  | 1    |
| 8-3    | 3    | WS0139 | DC61-02467A    | SUPPORT-MOTOR(U);<br>D100-PJT,PP,T3.0,W111,L   | SA  | 1    |
| 8-4    | 3    | WP0015 | DC61-02487A    | SPRING ETC TENSION;<br>SDC18809,HSWR-SWRH,CD   | SA  | 1    |
| 8-5    | 3    |        | DC63-01602A    | COVER BASE;<br>DV-F500E,PP,T2.5,-,NATURAL,BJ   | SA  | 1    |
| 8-6    | 3    | WB0004 | DC90-13377A    | ASSY BOTTOM; DV-F500E                          | SA  | 1    |
| 8-6-1  | 4    |        | DC97-17568A    | ASSY BRACKET COMP; DV-F500E,GI T1.0            | SNA | 1    |
| 8-6-2  | 4    |        | DC61-02447B    | LEG; D100 DRYER,FRPP,NTR,L49.3                 | SA  | 4    |
| 8-6-3  | 4    | WB0012 | DC61-03630A    | BASE; DV-F500E,PP,NATURAL,HB,FC2305            | SNA | 1    |
| 8-7    | 3    | WY0003 | DC93-00394A    | ASSY CONDENSER;<br>DV-F500E,DV90F5E6HGW,AI     | SNA | 1    |
| 8-8    | 3    | WY0003 | DC93-00395A    | ASSY CONDENSER;<br>DV-F500E,DV90F5E6HGW,AI     | SNA | 1    |
| 8-9    | 3    |        | DC93-00397A    | ASSY COVER CONDENSER;<br>DV-F500E,DV90F5E6HG   | SNA | 1    |
| 8-10   | 3    |        | DC93-00436A    | ASSY COVER CONDENSER;<br>DV-F500E,DV90F5E6HG   | SNA | 1    |
| 8-10-1 | 4    |        | DC61-03633A    | HOLDER CONDENSER;<br>DV-F500E,PP,T2.5,NATURA   | SA  | 1    |
| 8-11   | 3    |        | DC63-01644A    | ABSORBER SOUND;<br>DV90F5E6HGW,EPDM,OD20.5,-   | SA  | 2    |
| 8-12   | 3    |        | DC63-01645A    | ABSORBER SOUND;<br>DV90F5E6HGW,EPDM,OD20.5,-   | SA  | 2    |
| 8-13   | 3    | WX0187 | 2501-001233    | C-OIL; 15uF,-25to+80,450V,5,50x65,#250,        | SA  | 1    |
| 9      | 2    |        | DC93-00386A    | ASSY GUIDE DUCT FAN;<br>DV-F500E,DV90F5E6HGW   | SA  | 1    |
| 10     | 2    | WY0022 | DC93-00387A    | ASSY FAN DRY;<br>DV-F500E,DV90F5E6HGW,FRPP,O   | SA  | 1    |
| 10-1   | 3    |        | DC66-00795A    | BLADE-BLOWER; DV-F500E,FRPP,NATURAL            | SNA | 1    |
| 11     | 2    |        | DC93-00405B    | ASSY WIRE HARNESS-MAIN;<br>DV-F500E,COMP       | SA  | 1    |
| 12     | 3    | WI0026 | DC97-17457A    | ASSY FILTER GUIDE;<br>DV-F500E,DV90F5E6HGW,H   | SA  | 1    |
| 12-1   | 4    |        | DC61-02463A    | FIXER-CONDENSER; SDC18809,PP,SKY BLUE,D10      | SNA | 2    |
| 12-2   | 4    |        | DC61-03631A    | CASE FILTER; DV-F500E,PP,T2.5,KT GRAY,-,B      | SNA | 1    |
| 12-3   | 4    |        | DC62-00280C    | SEAL CONDENSER; DV-F500E,TPE,KT GRAY,-,L7      | SA  | 1    |
| 12-4   | 4    |        | DC62-00376A    | SEAL DUCT;<br>DV-F500E,PU-FOAM,BLACK,-,T15     | SA  | 1    |

| No.  | Lvl. | Loc.   | Material Code | Description & Specification                | SNA | Qty. |
|------|------|--------|---------------|--|-----|------|
| 12-5 | 4    |        | DC63-01613A   | FILTER GUIDE-UP; DV-F500E,PP,T2.5,KT GRAY  | SNA | 1    |
| 12-6 | 4    |        | DC63-01614A   | FILTER GUIDE; DV-F500E,PP,T2.5,KT GRAY     | SNA | 1    |
| 12-7 | 4    | WE0110 | DC66-90008C   | MAGNET R.S;<br>FERRITE,SEW-PM100,T5,W8,L20 | SNA | 1    |

# 7. Small Parts

## Exploded View



## Parts List

| No. | Lvl. | Loc.   | Material Code | Description & Specification                  | SNA | Qty. |
|-----|------|--------|---------------|--|-----|------|
| 1   | 2    | WJ5055 | DC65-00026A   | CLAMPER HOSE-FIX; SDC18809,PP,BJ350,NTR      | SA  | 1    |
| 2   | 3    | WI0294 | DC61-00553B   | HOLDER-WIRE SADDLE; PA,NTR,NYLON66           | SA  | 1    |
| 3   | 3    | WJ0021 | DC65-10001A   | CABLE TIE; PVC                               | SNA | 2    |
| 4   | 2    |        | 6502-000127   | CABLE CLAMP;<br>DAWH-18NB,ID15,-,NYLON66,NTR | SNA | 2    |
| 5   | 2    | WI0293 | DC61-40081A   | HOLDER WIRE; DAWH-2NC,PA,-,NATURAL,-         | SA  | 2    |
| 6   | 3    | WI0295 | DC61-60074A   | HOLDER WIRE; PA,-,NATURAL,-,101F,rectangl    | SA  | 1    |